



Datasheet for ABIN700510 **anti-PIM1 antibody (AA 251-350)**



[Go to Product page](#)

1 Image

Overview

Quantity:	100 µL
Target:	PIM1
Binding Specificity:	AA 251-350
Reactivity:	Human, Rat
Host:	Rabbit
Clonality:	Polyclonal
Conjugate:	This PIM1 antibody is un-conjugated
Application:	Western Blotting (WB), ELISA, Immunohistochemistry (Paraffin-embedded Sections) (IHC (p)), Immunofluorescence (Cultured Cells) (IF (cc)), Immunofluorescence (Paraffin-embedded Sections) (IF (p)), Flow Cytometry (FACS), Immunohistochemistry (Frozen Sections) (IHC (fro))

Product Details

Immunogen:	KLH conjugated synthetic peptide derived from human PIM1
Isotype:	IgG
Cross-Reactivity:	Human, Rat
Predicted Reactivity:	Mouse,Dog,Cow,Sheep,Pig,Chicken,Rabbit,Guinea Pig
Purification:	Purified by Protein A.

Target Details

Target:	PIM1
---------	------

Target Details

Alternative Name:	PIM1 + PIM3 (PIM1 Products)
Background:	<p>Synonyms: Oncogene PIM 1, Oncogene PIM1, PIM 1, pim 1 kinase 44 kDa isoform, Pim 1 kinase, pim 1 oncogene proviral integration site 1, Pim 1 oncogene, PIM, PIM1, pim1 kinase 44 kDa isoform, PIM1_HUMAN, Pim2, PIM3, Proto oncogene serine/threonine protein kinase Pim 1, Proto-oncogene serine/threonine-protein kinase Pim-1, Proviral integration site 1, Proviral integration site 2.</p> <p>Background: PIM1 is a member of the serine/threonine kinase PIM oncogene family. PIM1 has been implicated in lymphomagenesis, cell proliferation, apoptosis, differentiation and tumourigenesis. The PIM1 protein kinase is upregulated in prostate cancer.</p>
Molecular Weight:	45kDa
Gene ID:	5292
Pathways:	Glycosaminoglycan Metabolic Process

Application Details

Application Notes:	WB 1:300-5000 ELISA 1:500-1000 FCM 1:20-100 IHC-P 1:200-400 IHC-F 1:100-500 IF(IHC-P) 1:50-200 IF(IHC-F) 1:50-200 IF(ICC) 1:50-200
Restrictions:	For Research Use only

Handling

Format:	Liquid
Concentration:	1 µg/µL
Buffer:	0.01M TBS(pH 7.4) with 1 % BSA, 0.02 % Proclin300 and 50 % Glycerol.
Preservative:	ProClin
Precaution of Use:	This product contains ProClin: a POISONOUS AND HAZARDOUS SUBSTANCE, which should be handled by trained staff only.

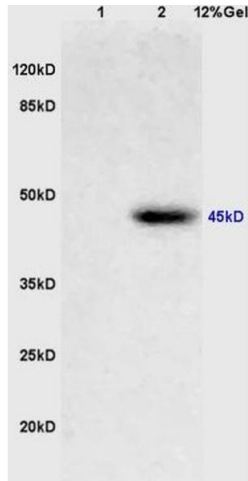
Handling

Storage: 4 °C,-20 °C

Storage Comment: Shipped at 4°C. Store at -20°C for one year. Avoid repeated freeze/thaw cycles.

Expiry Date: 12 months

Images



SDS-PAGE

Image 1. Lane 1: mouse brain lysates Lane 2: human colon carcinoma lysates probed with Anti PIM1 Polyclonal Antibody, Unconjugated (ABIN700510) at 1:200 in 4 °C. Followed by conjugation to secondary antibody at 1:3000 90 min in 37 °C. Predicted band 45 kDa. Observed band size: 45 kDa.