



Datasheet for ABIN700585
anti-RCC1 antibody (AA 11-120)



[Go to Product page](#)

1 Image

Overview

Quantity:	100 µL
Target:	RCC1
Binding Specificity:	AA 11-120
Reactivity:	Human
Host:	Rabbit
Clonality:	Polyclonal
Conjugate:	This RCC1 antibody is un-conjugated
Application:	ELISA, Immunofluorescence (Cultured Cells) (IF (cc)), Immunofluorescence (Paraffin-embedded Sections) (IF (p)), Immunohistochemistry (Paraffin-embedded Sections) (IHC (p)), Immunohistochemistry (Frozen Sections) (IHC (fro))

Product Details

Immunogen:	KLH conjugated synthetic peptide derived from human RCC1
Isotype:	IgG
Cross-Reactivity:	Human
Predicted Reactivity:	Mouse,Rat,Cow,Pig
Purification:	Purified by Protein A.

Target Details

Target:	RCC1
---------	------

Target Details

Alternative Name: [RCC1 \(RCC1 Products\)](#)

Background: Synonyms: Cell cycle regulatory protein, CHC 1, CHC1, Chromosome condensation 1, Chromosome condensation protein 1, Guanine nucleotide releasing protein, Ran GEF, RanGEF, RCC 1, RCC1 I, Regulator of chromosome condensation 1, Regulator of chromosome condensation, SHEP1.

Background: Ran GTPase plays important roles in nucleocytoplasmic transport in interphase and in both spindle formation and nuclear envelope (NE) assembly during mitosis. The latter functions rely on the presence of high local concentrations of GTP bound Ran near mitotic chromatin. RanGTP localization has been proposed to result from the association of Ran's GDP/GTP exchange factor, RCC1, with chromatin, but Ran is shown here to bind directly to chromatin in two modes, either dependent or independent of RCC1, and, where bound, to increase the affinity of chromatin for NE membranes.

Gene ID: 1104

UniProt: [P18754](#)

Pathways: [Chromatin Binding](#), [Protein targeting to Nucleus](#)

Application Details

Application Notes: ELISA 1:500-1000
IHC-P 1:200-400
IHC-F 1:100-500
IF(IHC-P) 1:50-200
IF(IHC-F) 1:50-200
IF(ICC) 1:50-200

Restrictions: For Research Use only

Handling

Format: Liquid

Concentration: 1 µg/µL

Buffer: 0.01M TBS(pH 7.4) with 1 % BSA, 0.02 % Proclin300 and 50 % Glycerol.

Preservative: ProClin

Precaution of Use: This product contains ProClin: a POISONOUS AND HAZARDOUS SUBSTANCE, which should be handled by trained staff only.

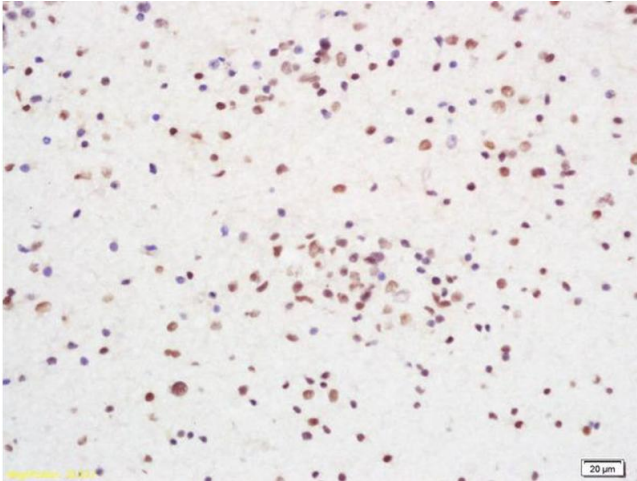
Handling

Storage: 4 °C, -20 °C

Storage Comment: Shipped at 4°C. Store at -20°C for one year. Avoid repeated freeze/thaw cycles.

Expiry Date: 12 months

Images



Immunohistochemistry

Image 1. Formalin-fixed and paraffin embedded human glioma carcinoma labeled with Anti RCC1 Polyclonal Antibody, Unconjugated (ABIN700585) at 1:200 followed by conjugation to the secondary antibody and DAB staining