

Datasheet for ABIN7006109

anti-CACNB1 antibody**2** Images[Go to Product page](#)

Overview

Quantity:	20 µL
Target:	CACNB1
Reactivity:	Human, Mouse, Rat
Host:	Rabbit
Clonality:	Polyclonal
Conjugate:	This CACNB1 antibody is un-conjugated
Application:	Western Blotting (WB), ELISA, Immunohistochemistry (IHC)

Product Details

Immunogen:	Fusion protein of human CACNB1
Isotype:	IgG
Characteristics:	Polyclonal Antibody
Purification:	Antigen affinity purification

Target Details

Target:	CACNB1
Alternative Name:	CACNB1 (CACNB1 Products)
Background:	The protein encoded by this gene belongs to the calcium channel beta subunit family. It plays an important role in the calcium channel by modulating G protein inhibition, increasing peak calcium current, controlling the alpha-1 subunit membrane targeting and shifting the voltage dependence of activation and inactivation. Alternative splicing occurs at this locus and three

Target Details

transcript variants encoding three distinct isoforms have been identified.

Molecular Weight: Observed_MW: Refer to figures
Calculated_MW: 66 kDa

UniProt: [Q02641](#)

Application Details

Application Notes: WB 1:500-1:2000, IHC 1:100-1:200, ELISA 1:5000-1:10000

Restrictions: For Research Use only

Handling

Format: Liquid

Concentration: 0.96 mg/mL

Buffer: PBS with 0.05 % Sodium azide and 40 % Glycerol, pH 7.4

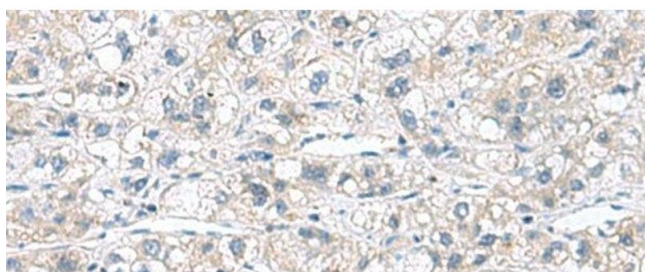
Preservative: Sodium azide

Precaution of Use: This product contains Sodium azide: a POISONOUS AND HAZARDOUS SUBSTANCE which should be handled by trained staff only.

Storage: -20 °C

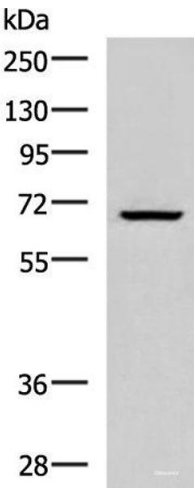
Storage Comment: Store at -20°C. Avoid freeze / thaw cycles.

Images



Immunohistochemistry (Paraffin-embedded Sections)

Image 1. Immunohistochemistry of paraffin-embedded Human liver cancer tissue using CACNB1 Polyclonal Antibody at dilution of 1:110(x200)



Western Blotting

Image 2. Western blot analysis of Raji cell lysate using CACNB1 Polyclonal Antibody at dilution of 1:800