

Datasheet for ABIN700645  
**anti-KSR1 antibody (AA 601-750)**[Go to Product page](#)

## 1 Image

## Overview

Quantity:	100 µL
Target:	KSR1
Binding Specificity:	AA 601-750
Reactivity:	Human, Mouse, Rat
Host:	Rabbit
Clonality:	Polyclonal
Conjugate:	This KSR1 antibody is un-conjugated
Application:	ELISA, Immunohistochemistry (Paraffin-embedded Sections) (IHC (p)), Immunofluorescence (Cultured Cells) (IF (cc)), Immunofluorescence (Paraffin-embedded Sections) (IF (p)), Immunohistochemistry (Frozen Sections) (IHC (fro))

## Product Details

Immunogen:	KLH conjugated synthetic peptide derived from human KSR1
Isotype:	IgG
Cross-Reactivity:	Human, Mouse, Rat
Predicted Reactivity:	Dog,Cow,Pig,Horse,Chicken,Rabbit
Purification:	Purified by Protein A.

## Target Details

Target:	KSR1
---------	------

## Target Details

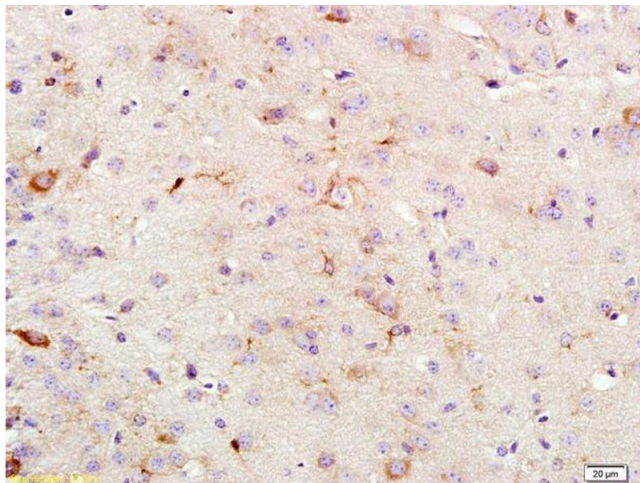
Alternative Name:	KSR1 ( <a href="#">KSR1 Products</a> )
Background:	Synonyms: KSR, RSU2, Kinase suppressor of Ras 1, KSR1 Background: Location-regulated scaffolding protein connecting MEK to RAF. Promotes MEK and RAF phosphorylation and activity through assembly of an activated signaling complex. By itself, it has no demonstrated kinase activity.
Gene ID:	8844
UniProt:	<a href="#">Q8IVT5</a>

## Application Details

Application Notes:	ELISA 1:500-1000 IHC-P 1:200-400 IHC-F 1:100-500 IF(IHC-P) 1:50-200 IF(IHC-F) 1:50-200 IF(ICC) 1:50-200
Restrictions:	For Research Use only

## Handling

Format:	Liquid
Concentration:	1 µg/µL
Buffer:	0.01M TBS( pH 7.4) with 1 % BSA, 0.02 % Proclin300 and 50 % Glycerol.
Preservative:	ProClin
Precaution of Use:	This product contains ProClin: a POISONOUS AND HAZARDOUS SUBSTANCE, which should be handled by trained staff only.
Storage:	4 °C, -20 °C
Storage Comment:	Shipped at 4°C. Store at -20°C for one year. Avoid repeated freeze/thaw cycles.
Expiry Date:	12 months



#### Immunohistochemistry

**Image 1.** Formalin-fixed and paraffin embedded rat brain labeled with Anti KSR1 Polyclonal Antibody, Unconjugated (ABIN700645) at 1:200 followed by conjugation to the secondary antibody and DAB staining