

Datasheet for ABIN7006990
anti-KRTAP11-1 antibody[Go to Product page](#)

1 Image

Overview

Quantity:	20 µL
Target:	KRTAP11-1
Reactivity:	Human, Mouse
Host:	Rabbit
Clonality:	Polyclonal
Conjugate:	This KRTAP11-1 antibody is un-conjugated
Application:	ELISA, Western Blotting (WB)

Product Details

Immunogen:	Synthetic peptide of human KRTAP11-1
Isotype:	IgG
Characteristics:	Polyclonal Antibody
Purification:	Antigen affinity purification

Target Details

Target:	KRTAP11-1
Alternative Name:	KRTAP11-1 (KRTAP11-1 Products)
Background:	Hair is a structure that is unique to mammals. It plays an important role in the retention of heat, as well as sexual dimorphism, attraction of mates and protection of skin. The major components of hair are -keratins and keratin-associated proteins (KRTAPs or KAPs), each of which are encoded by multigene families. Hair keratins form an intermediate filament (IF)

Target Details

network, which is embedded in an interfilamentous matrix consisting of KRTAPs. KRTAPS comprise three major groups, which are essential for the formation of rigid and resistant hair shafts through disulfide bond cross-linking or hydrophobic interactions with keratins. These groups are designated high cysteine (HS), which includes subfamilies 1, 2, 3, 10, 12, 16, 29 and 31, ultrahigh cysteine, including subfamilies 4, 5, 9, 17, 28, 30, 32 and 33, and high glycine-tyrosine (HGT), which includes subfamilies 6, 7, 8, 19, 20 and 21. In addition, subfamilies 11, 13, 24-27, 29, 34 and 35 have high serine content but relative low cysteine content. After further phylogenetic studies, subfamilies 14 and 15 have been grouped with subfamily 13 and subfamily 22 was combined with subfamily 19.

Molecular Weight:	Observed_MW: Refer to figures Calculated_MW: 17 kDa
-------------------	--

UniProt:	Q8IUC1
----------	------------------------

Application Details

Application Notes:	WB 1:500-1:2000, ELISA 1:5000-1:10000
--------------------	---------------------------------------

Restrictions:	For Research Use only
---------------	-----------------------

Handling

Format:	Liquid
---------	--------

Concentration:	1.1 mg/mL
----------------	-----------

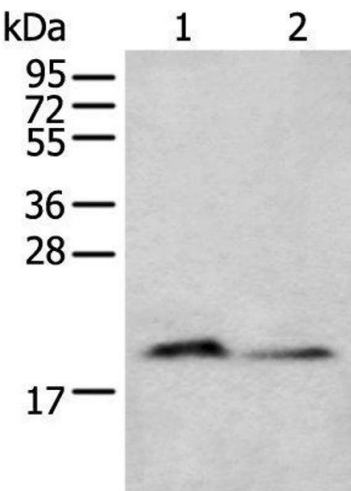
Buffer:	PBS with 0.05 % Sodium azide and 40 % Glycerol, pH 7.4
---------	--

Preservative:	Sodium azide
---------------	--------------

Precaution of Use:	This product contains Sodium azide: a POISONOUS AND HAZARDOUS SUBSTANCE which should be handled by trained staff only.
--------------------	--

Storage:	-20 °C
----------	--------

Storage Comment:	Store at -20°C. Avoid freeze / thaw cycles.
------------------	---



Western Blotting

Image 1. Western blot analysis of Mouse brain tissue and Raji cell lysates using KRTAP11-1 Polyclonal Antibody at dilution of 1:400