

Datasheet for ABIN7007190
anti-Endothelin 1 antibody[Go to Product page](#)

4 Images

Overview

| | |
|--------------|--|
| Quantity: | 60 µL |
| Target: | Endothelin 1 (EDN1) |
| Reactivity: | Human, Rat, Mouse |
| Host: | Rabbit |
| Clonality: | Polyclonal |
| Conjugate: | This Endothelin 1 antibody is un-conjugated |
| Application: | Western Blotting (WB), Immunohistochemistry (IHC), Immunofluorescence (IF) |

Product Details

| | |
|------------------|---|
| Immunogen: | Recombinant fusion protein of human Endothelin 1 (NP_001946.3). |
| Isotype: | IgG |
| Characteristics: | Polyclonal Antibody |
| Purification: | Affinity purification |

Target Details

| | |
|-------------------|---|
| Target: | Endothelin 1 (EDN1) |
| Alternative Name: | Endothelin 1 (EDN1 Products) |
| Background: | This gene encodes a preproprotein that is proteolytically processed to generate a secreted peptide that belongs to the endothelin/sarafotoxin family. This peptide is a potent vasoconstrictor and its cognate receptors are therapeutic targets in the treatment of pulmonary arterial hypertension. Aberrant expression of this gene may promote tumorigenesis. Alternative |

Target Details

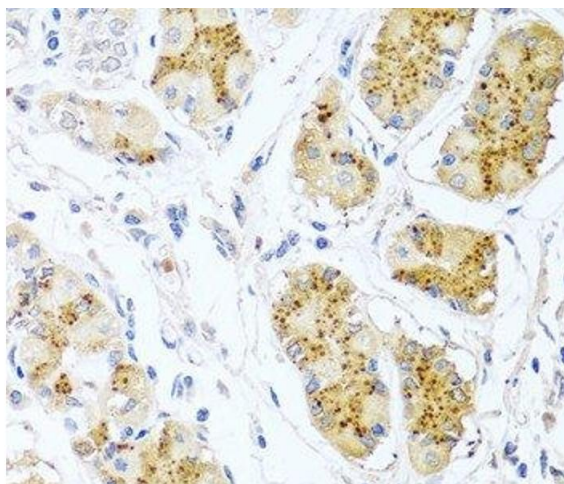
| | |
|-------------------|---|
| | splicing results in multiple transcript variants. |
| Molecular Weight: | Observed_MW: 24 kDa Calculated_MW: 24 kDa |
| Gene ID: | 1906 |
| UniProt: | P05305 |
| Pathways: | Hormone Transport , Negative Regulation of Hormone Secretion , Regulation of Systemic Arterial Blood Pressure by Hormones , cAMP Metabolic Process , Regulation of Muscle Cell Differentiation , Regulation of G-Protein Coupled Receptor Protein Signaling , Regulation of Cell Size |

Application Details

| | |
|--------------------|--|
| Application Notes: | WB 1:500-1:2000 IHC 1:50-1:100 IF 1:50-1:100 |
| Restrictions: | For Research Use only |

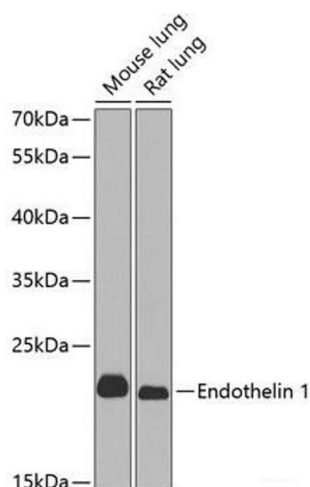
Handling

| | |
|--------------------|--|
| Format: | Liquid |
| Concentration: | 1 mg/mL |
| Buffer: | PBS with 0.02 % sodium azide, 50 % glycerol, pH 7.3 |
| Preservative: | Sodium azide |
| Precaution of Use: | This product contains Sodium azide: a POISONOUS AND HAZARDOUS SUBSTANCE which should be handled by trained staff only. |
| Storage: | -20 °C |
| Storage Comment: | Store at -20°C. Avoid freeze / thaw cycles. |



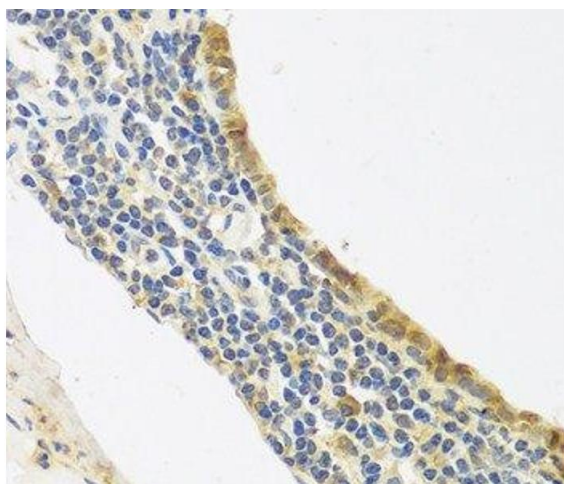
Immunohistochemistry (Paraffin-embedded Sections)

Image 1. Immunohistochemistry of paraffin-embedded Human stomach using Endothelin 1 Polyclonal Antibody at dilution of 1:100 (40x lens).



Western Blotting

Image 2. Western blot analysis of extracts of various cell lines using Endothelin 1 Polyclonal Antibody at dilution of 1:1000.



Immunohistochemistry (Paraffin-embedded Sections)

Image 3. Immunohistochemistry of paraffin-embedded Human lung cancer using Endothelin 1 Polyclonal Antibody at dilution of 1:100 (40x lens).

Please check the [product details page](#) for more images. Overall 4 images are available for ABIN7007190.