

Datasheet for ABIN7007378

anti-U2AF1 antibody

4 Images

[Go to Product page](#)

Overview

Quantity:	60 µL
Target:	U2AF1
Reactivity:	Human, Mouse, Rat
Host:	Rabbit
Clonality:	Polyclonal
Conjugate:	This U2AF1 antibody is un-conjugated
Application:	Western Blotting (WB), Immunohistochemistry (IHC)

Product Details

Immunogen:	Recombinant fusion protein of human U2AF1 (NP_006749.1).
Isotype:	IgG
Characteristics:	Polyclonal Antibody
Purification:	Affinity purification

Target Details

Target:	U2AF1
Alternative Name:	U2AF1 (U2AF1 Products)
Background:	This gene belongs to the splicing factor SR family of genes. U2 auxiliary factor, comprising a large and a small subunit, is a non-snRNP protein required for the binding of U2 snRNP to the pre-mRNA branch site. This gene encodes the small subunit which plays a critical role in both constitutive and enhancer-dependent RNA splicing by directly mediating interactions between

Target Details

the large subunit and proteins bound to the enhancers. Alternatively spliced transcript variants encoding different isoforms have been identified.

Molecular Weight: Observed_MW: 38 kDa
Calculated_MW: 8 kDa/19 kDa/27 kDa

Gene ID: 7307

UniProt: [Q01081](#)

Application Details

Application Notes: WB 1:500-1:2000 IHC 1:50-1:100

Restrictions: For Research Use only

Handling

Format: Liquid

Concentration: 1 mg/mL

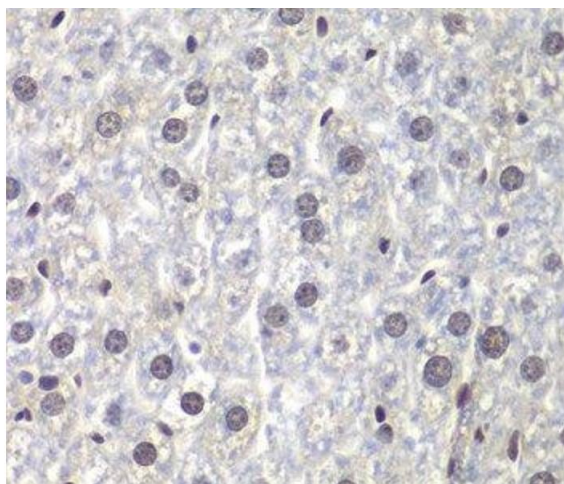
Buffer: PBS with 0.02 % sodium azide, 50 % glycerol, pH 7.3

Preservative: Sodium azide

Precaution of Use: This product contains Sodium azide: a POISONOUS AND HAZARDOUS SUBSTANCE which should be handled by trained staff only.

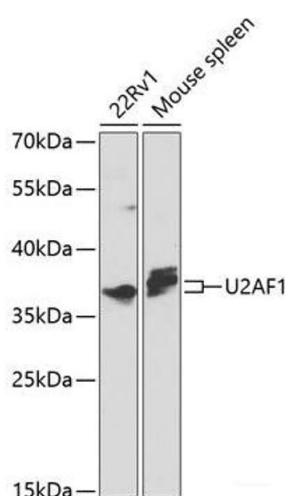
Storage: -20 °C

Storage Comment: Store at -20°C. Avoid freeze / thaw cycles.



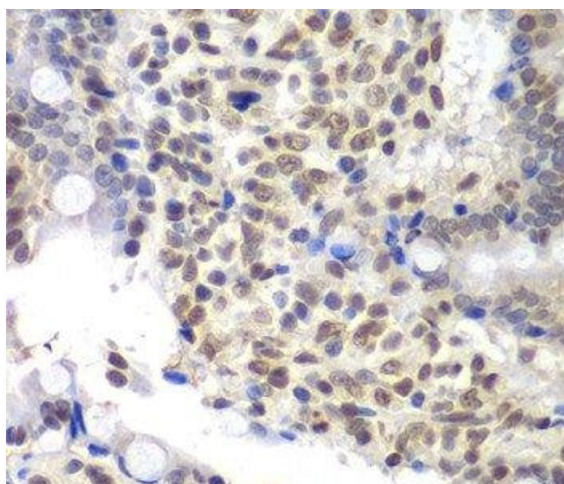
Immunohistochemistry (Paraffin-embedded Sections)

Image 1. Immunohistochemistry of paraffin-embedded Mouse liver using U2AF1 Polyclonal Antibody at dilution of 1:200 (40x lens).



Western Blotting

Image 2. Western blot analysis of extracts of various cell lines using U2AF1 Polyclonal Antibody at dilution of 1:1000.



Immunohistochemistry (Paraffin-embedded Sections)

Image 3. Immunohistochemistry of paraffin-embedded Rat Intestine using U2AF1 Polyclonal Antibody at dilution of 1:200 (40x lens).

Please check the [product details page](#) for more images. Overall 4 images are available for ABIN7007378.