

Datasheet for ABIN7007449

**anti-CBX5 antibody****2** Images[Go to Product page](#)

## Overview

Quantity:	60 µL
Target:	CBX5
Reactivity:	Human, Rat
Host:	Rabbit
Clonality:	Polyclonal
Conjugate:	This CBX5 antibody is un-conjugated
Application:	Western Blotting (WB), Immunofluorescence (IF)

## Product Details

Immunogen:	Recombinant fusion protein of human CBX5 (NP_001120794.1).
Isotype:	IgG
Characteristics:	Polyclonal Antibody
Purification:	Affinity purification

## Target Details

Target:	CBX5
Alternative Name:	CBX5 ( <a href="#">CBX5 Products</a> )
Background:	This gene encodes a highly conserved nonhistone protein, which is a member of the heterochromatin protein family. The protein is enriched in the heterochromatin and associated with centromeres. The protein has a single N-terminal chromodomain which can bind to histone proteins via methylated lysine residues, and a C-terminal chromo shadow-domain

## Target Details

(CSD) which is responsible for the homodimerization and interaction with a number of chromatin-associated nonhistone proteins. The encoded product is involved in the formation of functional kinetochore through interaction with essential kinetochore proteins. The gene has a pseudogene located on chromosome 3. Multiple alternatively spliced variants, encoding the same protein, have been identified.

Molecular Weight: Observed\_MW: 22 kDa  
Calculated\_MW: 22 kDa

Gene ID: 23468

UniProt: [P45973](#)

## Application Details

Application Notes: WB 1:500-1:2000 IF 1:50-1:200

Restrictions: For Research Use only

## Handling

Format: Liquid

Concentration: 1 mg/mL

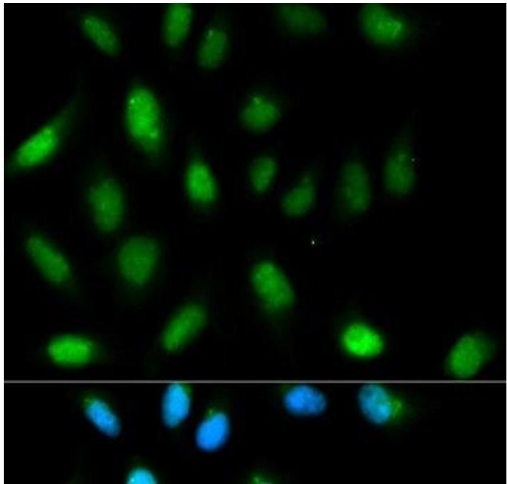
Buffer: PBS with 0.02 % sodium azide, 50 % glycerol, pH 7.3

Preservative: Sodium azide

Precaution of Use: This product contains Sodium azide: a POISONOUS AND HAZARDOUS SUBSTANCE which should be handled by trained staff only.

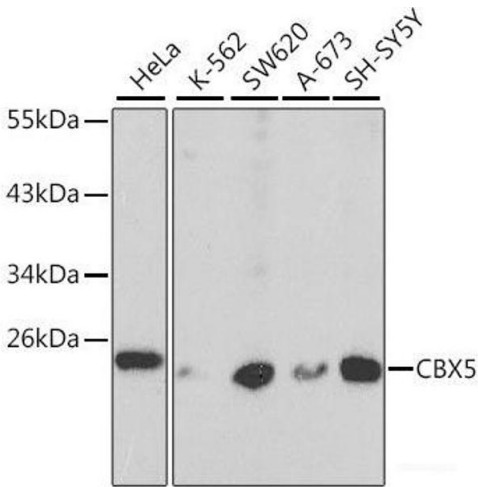
Storage: -20 °C

Storage Comment: Store at -20°C. Avoid freeze / thaw cycles.



Immunofluorescence

**Image 1.** Immunofluorescence analysis of HeLa cells using CBX5 Polyclonal Antibody



Western Blotting

**Image 2.** Western blot analysis of extracts of various cell lines using CBX5 Polyclonal Antibody at dilution of 1:1000.