

Datasheet for ABIN7007527

**anti-H2AFX antibody**

8 Images

[Go to Product page](#)

## Overview

Quantity:	60 µL
Target:	H2AFX
Reactivity:	Human, Mouse, Rat
Host:	Rabbit
Clonality:	Polyclonal
Conjugate:	This H2AFX antibody is un-conjugated
Application:	Western Blotting (WB), Immunohistochemistry (IHC), Immunofluorescence (IF)

## Product Details

Immunogen:	A synthetic peptide of human Histone H2AX (NP_002096.1).
Isotype:	IgG
Characteristics:	Polyclonal Antibody
Purification:	Affinity purification

## Target Details

Target:	H2AFX
Alternative Name:	Histone H2AX ( <a href="#">H2AFX Products</a> )
Background:	Histones are basic nuclear proteins that are responsible for the nucleosome structure of the chromosomal fiber in eukaryotes. Two molecules of each of the four core histones (H2A, H2B, H3, and H4) form an octamer, around which approximately 146 bp of DNA is wrapped in repeating units, called nucleosomes. The linker histone, H1, interacts with linker DNA between

## Target Details

nucleosomes and functions in the compaction of chromatin into higher order structures. This gene encodes a replication-independent histone that is a member of the histone H2A family, and generates two transcripts through the use of the conserved stem-loop termination motif, and the polyA addition motif.

Molecular Weight: Observed\_MW: 16 kDa  
Calculated\_MW: 15 kDa

Gene ID: 3014

UniProt: [P16104](#)

Pathways: [Telomere Maintenance](#), [DNA Damage Repair](#), [Positive Regulation of Response to DNA Damage Stimulus](#)

## Application Details

Application Notes: WB 1:500-1:1000 IHC 1:100-1:200 IF 1:50-1:200

Restrictions: For Research Use only

## Handling

Format: Liquid

Concentration: 1 mg/mL

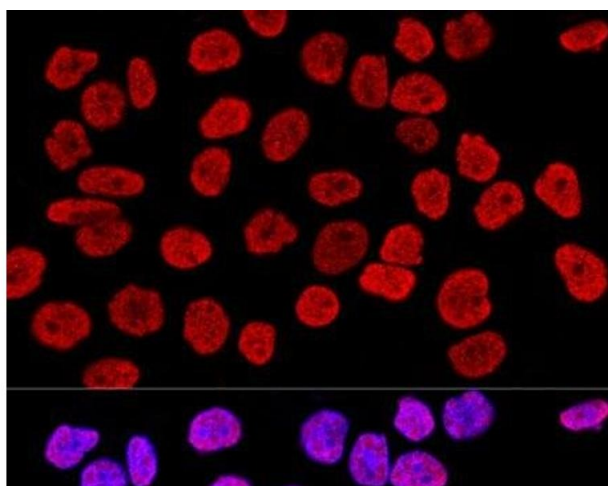
Buffer: PBS with 0.02 % sodium azide, 50 % glycerol, pH 7.3

Preservative: Sodium azide

Precaution of Use: This product contains Sodium azide: a POISONOUS AND HAZARDOUS SUBSTANCE which should be handled by trained staff only.

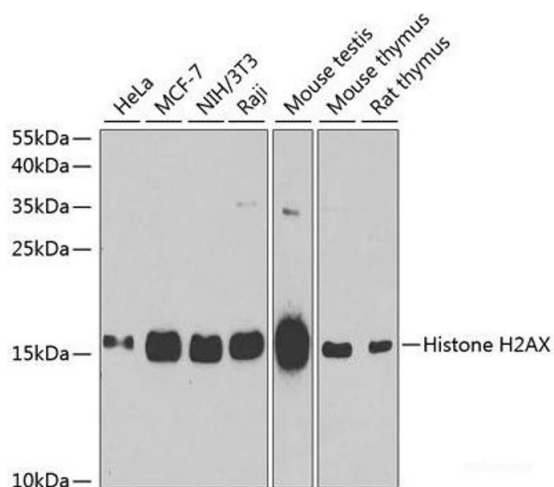
Storage: -20 °C

Storage Comment: Store at -20°C. Avoid freeze / thaw cycles.



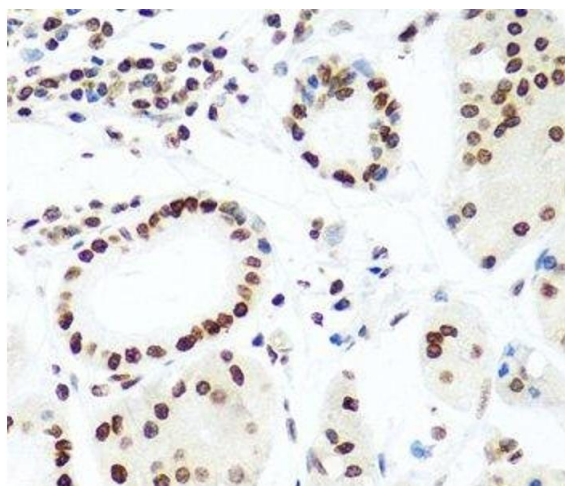
### Immunofluorescence

**Image 1.** Confocal immunofluorescence analysis of HeLa cells using Histone H2AX Polyclonal Antibody at dilution of 1:400. Blue: DAPI for nuclear staining.



### Western Blotting

**Image 2.** Western blot analysis of extracts of various cell lines using Histone H2AX Polyclonal Antibody at dilution of 1:1000.



### Immunohistochemistry (Paraffin-embedded Sections)

**Image 3.** Immunohistochemistry of paraffin-embedded Human stomach using Histone H2AX Polyclonal Antibody at dilution of 1:100 (40x lens).

Please check the [product details page](#) for more images. Overall 8 images are available for ABIN7007527.