

Datasheet for ABIN7007636

anti-alpha Fetoprotein antibody**2** Images[Go to Product page](#)

Overview

Quantity:	60 µL
Target:	alpha Fetoprotein (AFP)
Reactivity:	Human, Mouse, Rat
Host:	Mouse
Clonality:	Monoclonal
Conjugate:	This alpha Fetoprotein antibody is un-conjugated
Application:	Immunohistochemistry (IHC), Immunofluorescence (IF)

Product Details

Immunogen:	Recombinant protein of human AFP
Isotype:	IgG
Characteristics:	Monoclonal Antibody
Purification:	Affinity purification

Target Details

Target:	alpha Fetoprotein (AFP)
Alternative Name:	AFP (AFP Products)
Background:	This gene encodes alpha-fetoprotein, a major plasma protein produced by the yolk sac and the liver during fetal life. Alpha-fetoprotein expression in adults is often associated with hepatoma or teratoma. However, hereditary persistence of alpha-fetoprotein may also be found in individuals with no obvious pathology. The protein is thought to be the fetal counterpart of

Target Details

serum albumin, and the alpha-fetoprotein and albumin genes are present in tandem in the same transcriptional orientation on chromosome 4. Alpha-fetoprotein is found in monomeric as well as dimeric and trimeric forms, and binds copper, nickel, fatty acids and bilirubin. The level of alpha-fetoprotein in amniotic fluid is used to measure renal loss of protein to screen for spina bifida and anencephaly.

Gene ID: 174

UniProt: [P02771](#)

Pathways: [C21-Steroid Hormone Metabolic Process](#)

Application Details

Application Notes: IHC 1:50-1:200 IF 1:50-1:200

Restrictions: For Research Use only

Handling

Format: Liquid

Concentration: 1 mg/mL

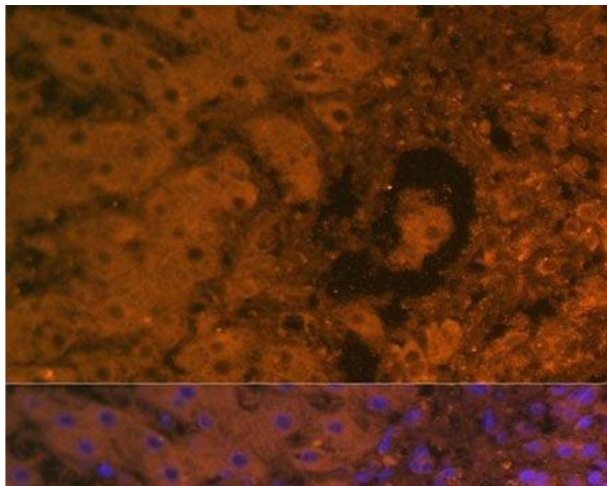
Buffer: PBS with 0.02 % sodium azide, 50 % glycerol, pH 7.3

Preservative: Sodium azide

Precaution of Use: This product contains Sodium azide: a POISONOUS AND HAZARDOUS SUBSTANCE which should be handled by trained staff only.

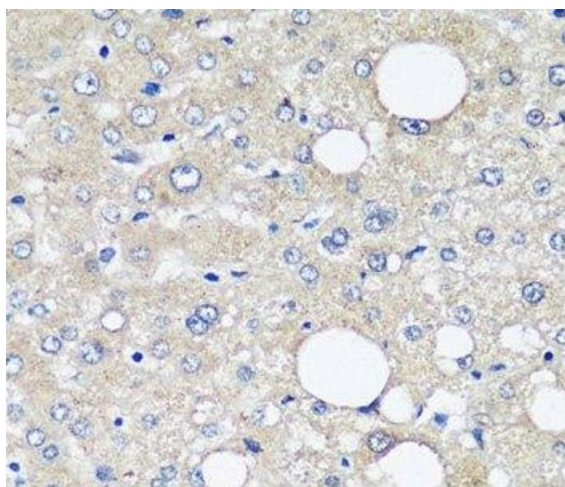
Storage: -20 °C

Storage Comment: Store at -20°C. Avoid freeze / thaw cycles.



Immunofluorescence

Image 1. Immunofluorescence analysis of Human liver cancer using AFP Monoclonal Antibody at dilution of 1:100. Blue: DAPI for nuclear staining.



Immunohistochemistry (Paraffin-embedded Sections)

Image 2. Immunohistochemistry of paraffin-embedded Human liver cancer using AFP Monoclonal Antibody at dilution of 1:12.5 (40x lens).