

Datasheet for ABIN7007777

anti-SLC16A7 antibody[Go to Product page](#)**1** Image

Overview

Quantity:	60 µL
Target:	SLC16A7
Reactivity:	Human, Rat, Mouse
Host:	Rabbit
Clonality:	Polyclonal
Conjugate:	This SLC16A7 antibody is un-conjugated
Application:	Western Blotting (WB)

Product Details

Immunogen:	A synthetic peptide of human SLC16A7 (NP_001257551.1).
Isotype:	IgG
Characteristics:	Polyclonal Antibody
Purification:	Affinity purification

Target Details

Target:	SLC16A7
Alternative Name:	SLC16A7 (SLC16A7 Products)
Background:	This gene is a member of the monocarboxylate transporter family. Members in this family transport metabolites, such as lactate, pyruvate, and ketone bodies. The protein encoded by this gene catalyzes the proton-linked transport of monocarboxylates and has the highest affinity for pyruvate. This protein has been reported to be more highly expressed in prostate and

Target Details

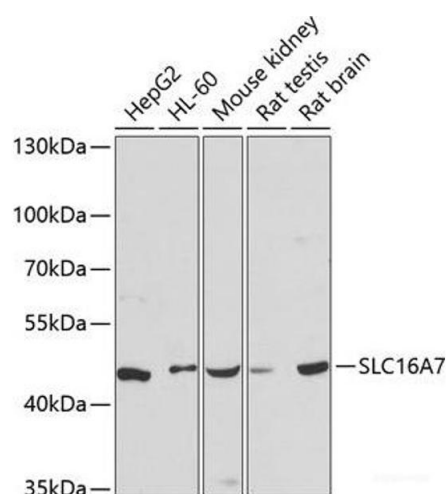
	colorectal cancer specimens when compared to control specimens. Alternative splicing results in multiple transcript variants.
Molecular Weight:	Observed_MW: 45 kDa Calculated_MW: 52 kDa
Gene ID:	9194
UniProt:	O60669

Application Details

Application Notes:	WB 1:500-1:2000
Restrictions:	For Research Use only

Handling

Format:	Liquid
Concentration:	1 mg/mL
Buffer:	PBS with 0.02 % sodium azide, 50 % glycerol, pH 7.3
Preservative:	Sodium azide
Precaution of Use:	This product contains Sodium azide: a POISONOUS AND HAZARDOUS SUBSTANCE which should be handled by trained staff only.
Storage:	-20 °C
Storage Comment:	Store at -20°C. Avoid freeze / thaw cycles.



Western Blotting

Image 1. Western blot analysis of extracts of various cell lines using SLC16A7 Polyclonal Antibody at dilution of 1:3000.