



Datasheet for ABIN7007805 anti-IGFBP5 antibody



[Go to Product page](#)

3 Images

Overview

Quantity:	60 µL
Target:	IGFBP5
Reactivity:	Human, Mouse, Rat
Host:	Rabbit
Clonality:	Polyclonal
Conjugate:	This IGFBP5 antibody is un-conjugated
Application:	Immunohistochemistry (IHC), Immunofluorescence (IF)

Product Details

Immunogen:	Recombinant fusion protein of human IGFBP5 (NP_000590.1).
Isotype:	IgG
Characteristics:	Polyclonal Antibody
Purification:	Affinity purification

Target Details

Target:	IGFBP5
Alternative Name:	IGFBP5 (IGFBP5 Products)
Background:	IGFBP5 (Insulin Like Growth Factor Binding Protein 5) is a Protein Coding gene. Diseases associated with IGFBP5 include Insulin-Like Growth Factor I and Renal Osteodystrophy. Among its related pathways are Myometrial Relaxation and Contraction Pathways and Senescence and Autophagy in Cancer. Gene Ontology (GO) annotations related to this gene include fibronectin

Target Details

binding and insulin-like growth factor I binding. An important paralog of this gene is IGFBP3.

Gene ID: 3488

UniProt: [P24593](#)

Pathways: [WNT Signaling](#), [Carbohydrate Homeostasis](#), [Myometrial Relaxation and Contraction](#), [Regulation of Carbohydrate Metabolic Process](#), [Autophagy](#), [Smooth Muscle Cell Migration](#), [Growth Factor Binding](#)

Application Details

Application Notes: IHC 1:50-1:200 IF 1:50-1:200

Restrictions: For Research Use only

Handling

Format: Liquid

Concentration: 1 mg/mL

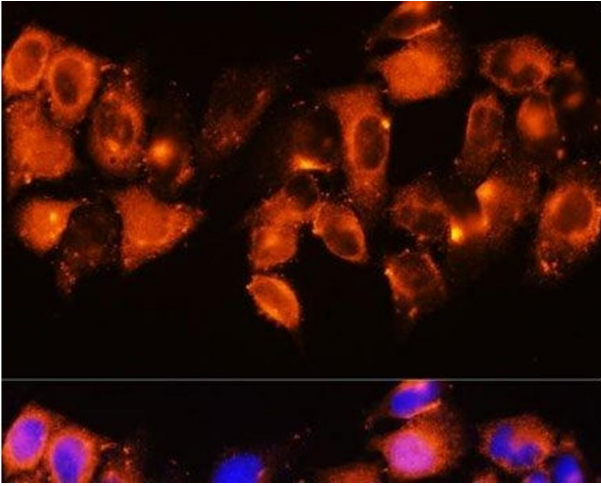
Buffer: PBS with 0.02 % sodium azide, 50 % glycerol, pH 7.3

Preservative: Sodium azide

Precaution of Use: This product contains Sodium azide: a POISONOUS AND HAZARDOUS SUBSTANCE which should be handled by trained staff only.

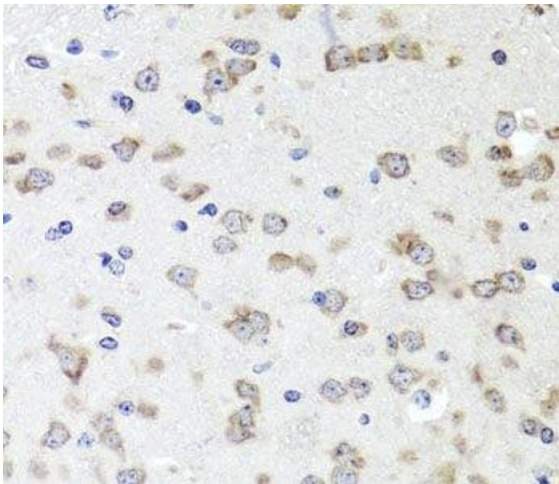
Storage: -20 °C

Storage Comment: Store at -20°C. Avoid freeze / thaw cycles.



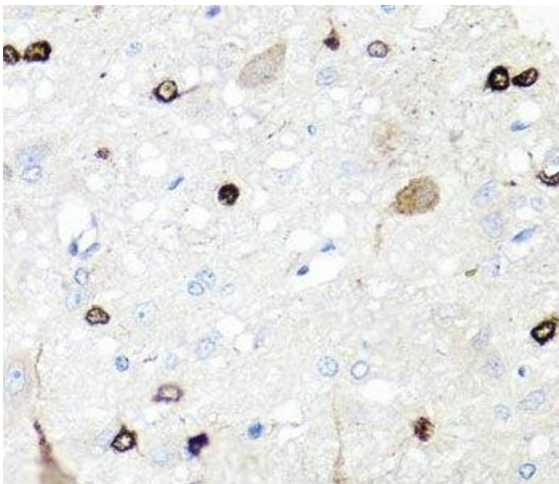
Immunofluorescence

Image 1. Immunofluorescence analysis of HeLa cells using IGFBP5 Polyclonal Antibody at dilution of 1:100. Blue: DAPI for nuclear staining.



Immunohistochemistry (Paraffin-embedded Sections)

Image 2. Immunohistochemistry of paraffin-embedded Mouse brain using IGFBP5 Polyclonal Antibody at dilution of 1:100 (40x lens).



Immunohistochemistry (Paraffin-embedded Sections)

Image 3. Immunohistochemistry of paraffin-embedded Rat brain using IGFBP5 Polyclonal Antibody at dilution of 1:100 (40x lens).