

Datasheet for ABIN7008086

**anti-IL1A antibody****2** Images[Go to Product page](#)

## Overview

Quantity:	60 µL
Target:	IL1A
Reactivity:	Human, Mouse
Host:	Rabbit
Clonality:	Polyclonal
Conjugate:	This IL1A antibody is un-conjugated
Application:	Immunohistochemistry (IHC)

## Product Details

Immunogen:	Recombinant fusion protein of human IL1A (NP_000566.3).
Isotype:	IgG
Characteristics:	Polyclonal Antibody
Purification:	Affinity purification

## Target Details

Target:	IL1A
Alternative Name:	IL1A ( <a href="#">IL1A Products</a> )
Background:	The protein encoded by this gene is a member of the interleukin 1 cytokine family. This cytokine is a pleiotropic cytokine involved in various immune responses, inflammatory processes, and hematopoiesis. This cytokine is produced by monocytes and macrophages as a proprotein, which is proteolytically processed and released in response to cell injury, and thus induces

## Target Details

apoptosis. This gene and eight other interleukin 1 family genes form a cytokine gene cluster on chromosome 2. It has been suggested that the polymorphism of these genes is associated with rheumatoid arthritis and Alzheimer's disease.

Gene ID: 3552

UniProt: [P01583](#)

Pathways: [NF-kappaB Signaling](#), [Autophagy](#), [Cancer Immune Checkpoints](#)

## Application Details

Application Notes: IHC 1:50-1:100

Restrictions: For Research Use only

## Handling

Format: Liquid

Concentration: 1 mg/mL

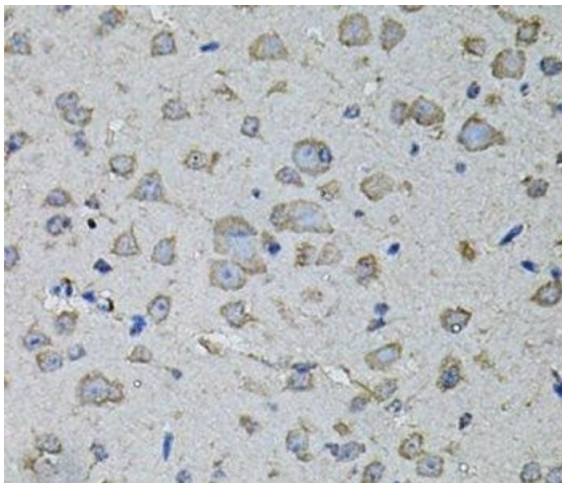
Buffer: PBS with 0.02 % sodium azide, 50 % glycerol, pH 7.3

Preservative: Sodium azide

Precaution of Use: This product contains Sodium azide: a POISONOUS AND HAZARDOUS SUBSTANCE which should be handled by trained staff only.

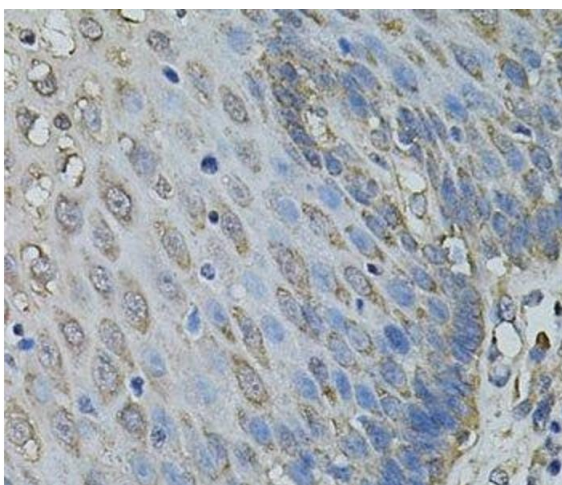
Storage: -20 °C

Storage Comment: Store at -20°C. Avoid freeze / thaw cycles.



#### Immunohistochemistry (Paraffin-embedded Sections)

**Image 1.** Immunohistochemistry of paraffin-embedded Mouse brain using IL1A Polyclonal Antibody at dilution of 1:100 (40x lens).



#### Immunohistochemistry (Paraffin-embedded Sections)

**Image 2.** Immunohistochemistry of paraffin-embedded Human esophagus using IL1A Polyclonal Antibody at dilution of 1:100 (40x lens).