

Datasheet for ABIN7008397

anti-Solute Carrier Family 34 (Type II Sodium/phosphate Cotransporter), Member 1 (SLC34A1) antibody



[Go to Product page](#)

2 Images

Overview

Quantity:	60 µL
Target:	Solute Carrier Family 34 (Type II Sodium/phosphate Cotransporter), Member 1 (SLC34A1)
Reactivity:	Human, Mouse, Rat
Host:	Rabbit
Clonality:	Polyclonal
Conjugate:	Un-conjugated
Application:	Western Blotting (WB), Immunofluorescence (IF)

Product Details

Immunogen:	Recombinant fusion protein of human SLC34A1 (NP_003043.3).
Isotype:	IgG
Characteristics:	Polyclonal Antibody
Purification:	Affinity purification

Target Details

Target:	Solute Carrier Family 34 (Type II Sodium/phosphate Cotransporter), Member 1 (SLC34A1)
Alternative Name:	SLC34A1 (SLC34A1 Products)
Background:	This gene encodes a member of the type II sodium-phosphate cotransporter family. Mutations in this gene are associated with hypophosphatemia nephrolithiasis/osteoporosis 1. Alternative splicing results in multiple transcript variants.

Target Details

Molecular Weight: Observed_MW: 69 kDa
Calculated_MW: 36 kDa/68 kDa

Gene ID: 6569

UniProt: [Q06495](#)

Application Details

Application Notes: WB 1:500-1:2000 IF 1:50-1:200

Restrictions: For Research Use only

Handling

Format: Liquid

Concentration: 1 mg/mL

Buffer: PBS with 0.02 % sodium azide, 50 % glycerol, pH 7.3

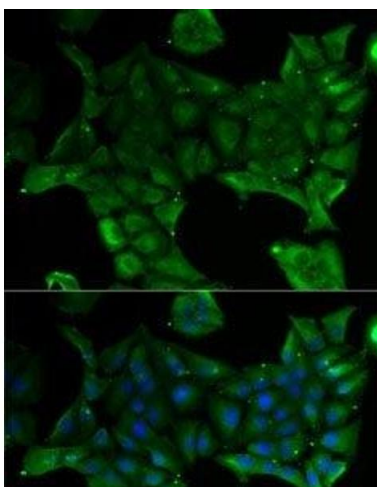
Preservative: Sodium azide

Precaution of Use: This product contains Sodium azide: a POISONOUS AND HAZARDOUS SUBSTANCE which should be handled by trained staff only.

Storage: -20 °C

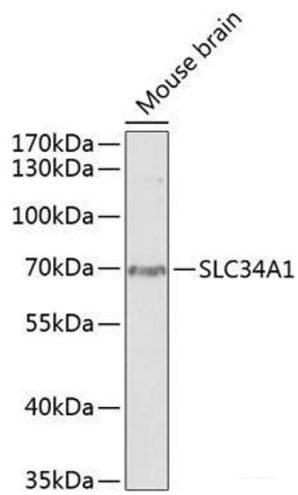
Storage Comment: Store at -20°C. Avoid freeze / thaw cycles.

Images



Immunofluorescence

Image 1. Immunofluorescence analysis of U2OS cells using SLC34A1 Polyclonal Antibody



Western Blotting

Image 2. Western blot analysis of extracts of Mouse brain using SLC34A1 Polyclonal Antibody at dilution of 1:1000.