



[Go to Product page](#)

Datasheet for ABIN7008426

## anti-CLIC1 antibody

### 2 Images

#### Overview

Quantity:	60 µL
Target:	CLIC1
Reactivity:	Human, Rat, Mouse
Host:	Rabbit
Clonality:	Polyclonal
Conjugate:	This CLIC1 antibody is un-conjugated
Application:	Western Blotting (WB), Immunofluorescence (IF)

#### Product Details

Immunogen:	Recombinant fusion protein of human CLIC1 (NP_001279.2).
Isotype:	IgG
Characteristics:	Polyclonal Antibody
Purification:	Affinity purification

#### Target Details

Target:	CLIC1
Alternative Name:	CLIC1 ( <a href="#">CLIC1 Products</a> )
Background:	Chloride channels are a diverse group of proteins that regulate fundamental cellular processes including stabilization of cell membrane potential, transepithelial transport, maintenance of intracellular pH, and regulation of cell volume. Chloride intracellular channel 1 is a member of the p64 family, the protein localizes principally to the cell nucleus and exhibits both nuclear and

## Target Details

plasma membrane chloride ion channel activity.

Molecular Weight: Observed\_MW: 27 kDa  
Calculated\_MW: 26 kDa

Gene ID: 1192

UniProt: [O00299](#)

## Application Details

Application Notes: WB 1:500-1:2000 IF 1:50-1:200

Restrictions: For Research Use only

## Handling

Format: Liquid

Concentration: 1 mg/mL

Buffer: PBS with 0.02 % sodium azide, 50 % glycerol, pH 7.3

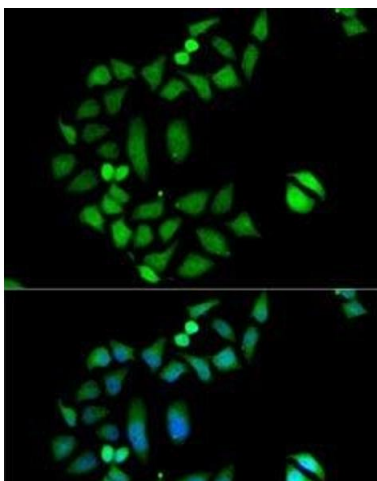
Preservative: Sodium azide

Precaution of Use: This product contains Sodium azide: a POISONOUS AND HAZARDOUS SUBSTANCE which should be handled by trained staff only.

Storage: -20 °C

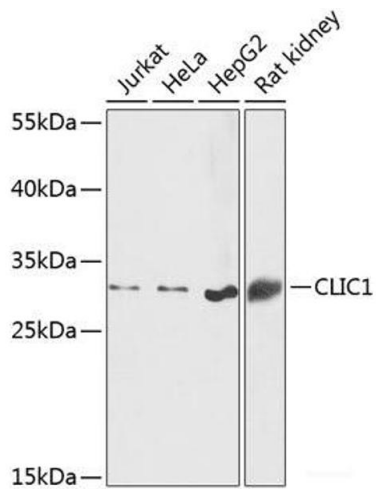
Storage Comment: Store at -20°C. Avoid freeze / thaw cycles.

## Images



### Immunofluorescence

**Image 1.** Immunofluorescence analysis of MCF7 cells using CLIC1 Polyclonal Antibody



### Western Blotting

**Image 2.** Western blot analysis of extracts of various cell lines using CLIC1 Polyclonal Antibody at dilution of 1:1000.