



Datasheet for ABIN7008504 anti-DYNLL2 antibody



[Go to Product page](#)

1 Image

Overview

Quantity:	60 µL
Target:	DYNLL2
Reactivity:	Human, Mouse, Rat
Host:	Rabbit
Clonality:	Polyclonal
Conjugate:	This DYNLL2 antibody is un-conjugated
Application:	Immunofluorescence (IF)

Product Details

Immunogen:	Recombinant fusion protein of human DYNLL2 (NP_542408.1).
Isotype:	IgG
Characteristics:	Polyclonal Antibody
Purification:	Affinity purification

Target Details

Target:	DYNLL2
Alternative Name:	DYNLL2 (DYNLL2 Products)
Background:	Dynein light chain 2, cytoplasmic is a protein that in humans is encoded by the DYNLL2 gene. Acts as one of several non-catalytic accessory components of the cytoplasmic dynein 1 complex that are thought to be involved in linking dynein to cargos and to adapter proteins that regulate dynein function. Cytoplasmic dynein 1 acts as a motor for the intracellular retrograde motility of

Target Details

vesicles and organelles along microtubules.

Gene ID: 140735

UniProt: [Q96FJ2](#)

Pathways: [M Phase](#)

Application Details

Application Notes: IF 1:50-1:200

Restrictions: For Research Use only

Handling

Format: Liquid

Concentration: 1 mg/mL

Buffer: PBS with 0.02 % sodium azide, 50 % glycerol, pH 7.3

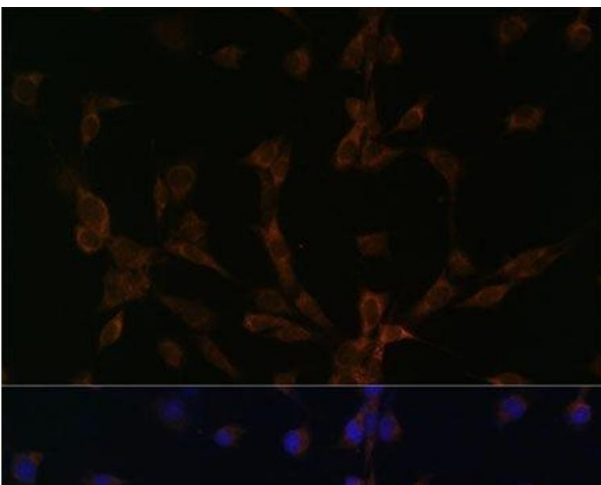
Preservative: Sodium azide

Precaution of Use: This product contains Sodium azide: a POISONOUS AND HAZARDOUS SUBSTANCE which should be handled by trained staff only.

Storage: -20 °C

Storage Comment: Store at -20°C. Avoid freeze / thaw cycles.

Images



Immunofluorescence

Image 1. Immunofluorescence analysis of NIH/3T3 cells using DYNLL2 Polyclonal Antibody at dilution of 1:100. Blue: DAPI for nuclear staining.