



Datasheet for ABIN7008584
anti-SERPINB5 antibody



[Go to Product page](#)

2 Images

Overview

Quantity:	60 µL
Target:	SERPINB5
Reactivity:	Human, Mouse
Host:	Rabbit
Clonality:	Polyclonal
Application:	Immunohistochemistry (IHC)

Product Details

Immunogen:	Recombinant fusion protein of human SERPINB5 (NP_002630.2).
Isotype:	IgG
Characteristics:	Polyclonal Antibody
Purification:	Affinity purification

Target Details

Target:	SERPINB5
Alternative Name:	SERPINB5 (SERPINB5 Products)
Background:	Maspin (mammary serine protease inhibitor) also known as serpin B5 is a protein that in humans is encoded by the SERPINB5 gene.[1] This protein belongs to the serpin (serine protease inhibitor) superfamily.[1] SERPINB5 also functions as a tumor suppressor gene in epithelial cells. The expressed protein suppresses the ability of cancer cells to invade and metastasize other tissues. The protein also functions as an angiogenesis inhibitor. It blocks the

Target Details

growth, invasion, and metastatic properties of mammary tumors. As it does not undergo the S (stressed) to R (relaxed) conformational transition characteristic of active serpins, it exhibits no serine protease inhibitory activity.

Gene ID: 5268

UniProt: [P36952](#)

Pathways: [p53 Signaling](#)

Application Details

Application Notes: IHC 1:50-1:200

Restrictions: For Research Use only

Handling

Format: Liquid

Concentration: 1 mg/mL

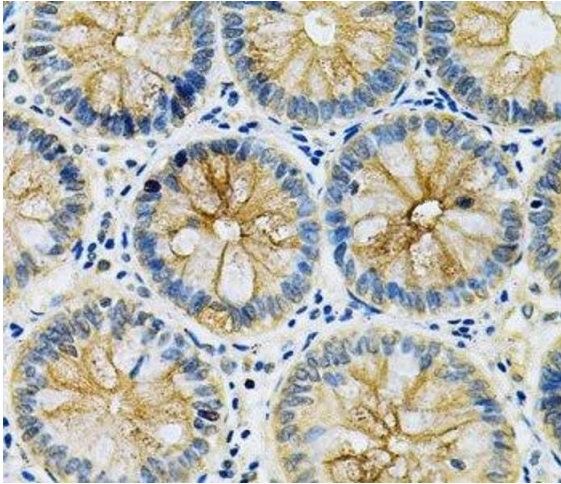
Buffer: PBS with 0.02 % sodium azide, 50 % glycerol, pH 7.3

Preservative: Sodium azide

Precaution of Use: This product contains Sodium azide: a POISONOUS AND HAZARDOUS SUBSTANCE which should be handled by trained staff only.

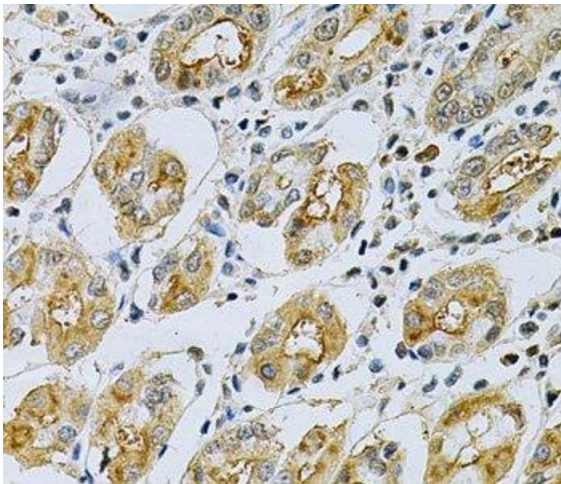
Storage: -20 °C

Storage Comment: Store at -20°C. Avoid freeze / thaw cycles.



Immunohistochemistry (Paraffin-embedded Sections)

Image 1. Immunohistochemistry of paraffin-embedded Human rectum using SERPINB5 Polyclonal Antibody at dilution of 1:200 (40x lens).



Immunohistochemistry (Paraffin-embedded Sections)

Image 2. Immunohistochemistry of paraffin-embedded Human stomach using SERPINB5 Polyclonal Antibody at dilution of 1:200 (40x lens).