

Datasheet for ABIN7008604

anti-Claudin 2 antibody[Go to Product page](#)**1** Image

Overview

Quantity:	60 µL
Target:	Claudin 2 (CLDN2)
Reactivity:	Mouse
Host:	Rabbit
Clonality:	Polyclonal
Application:	Western Blotting (WB)

Product Details

Immunogen:	Recombinant fusion protein of human CLDN2 (NP_001164566.1).
Isotype:	IgG
Characteristics:	Polyclonal Antibody
Purification:	Affinity purification

Target Details

Target:	Claudin 2 (CLDN2)
Alternative Name:	CLDN2 (CLDN2 Products)
Background:	This gene product belongs to the claudin protein family whose members have been identified as major integral membrane proteins localized exclusively at tight junctions. Claudins are expressed in an organ-specific manner and regulate tissue-specific physiologic properties of tight junctions. This protein is expressed in the intestine. Alternatively spliced transcript variants with different 5' untranslated region have been found for this gene.

Target Details

Molecular Weight: Observed_MW: 25 kDa
Calculated_MW: 24 kDa

Gene ID: 9075

UniProt: [P57739](#)

Pathways: [Hepatitis C](#)

Application Details

Application Notes: WB 1:500-1:2000

Restrictions: For Research Use only

Handling

Format: Liquid

Concentration: 1 mg/mL

Buffer: PBS with 0.02 % sodium azide, 50 % glycerol, pH 7.3

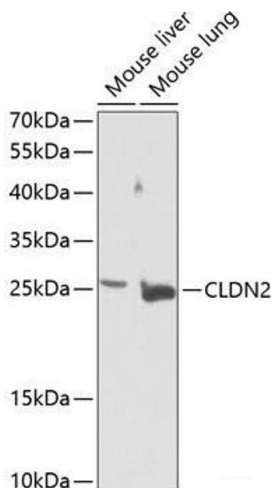
Preservative: Sodium azide

Precaution of Use: This product contains Sodium azide: a POISONOUS AND HAZARDOUS SUBSTANCE which should be handled by trained staff only.

Storage: -20 °C

Storage Comment: Store at -20°C. Avoid freeze / thaw cycles.

Images



Western Blotting

Image 1. Western blot analysis of extracts of various cell lines using CLDN2 Polyclonal Antibody at dilution of 1:1000.