



## Datasheet for ABIN7008617 anti-SPDEF/PSE antibody



[Go to Product page](#)

### 2 Images

#### Overview

Quantity:	60 µL
Target:	SPDEF/PSE (SPDEF)
Reactivity:	Human, Rat
Host:	Rabbit
Clonality:	Polyclonal
Application:	Immunohistochemistry (IHC), Immunofluorescence (IF)

#### Product Details

Immunogen:	Recombinant fusion protein of human SPDEF (NP_036523.1).
Isotype:	IgG
Characteristics:	Polyclonal Antibody
Purification:	Affinity purification

#### Target Details

Target:	SPDEF/PSE (SPDEF)
Alternative Name:	SPDEF ( <a href="#">SPDEF Products</a> )
Background:	The protein encoded by this gene belongs to the ETS family of transcription factors. It is highly expressed in the prostate epithelial cells, and functions as an androgen-independent transactivator of prostate-specific antigen (PSA) promoter. Higher expression of this protein has also been reported in brain, breast, lung and ovarian tumors, compared to the corresponding normal tissues, and it shows better tumor-association than other cancer-

## Target Details

associated molecules, making it a more suitable target for developing specific cancer therapies. Alternatively spliced transcript variants encoding different isoforms have been found for this gene.

Gene ID: 25803

UniProt: [O95238](#)

## Application Details

Application Notes: IHC 1:50-1:200 IF 1:50-1:100

Restrictions: For Research Use only

## Handling

Format: Liquid

Concentration: 1 mg/mL

Buffer: PBS with 0.02 % sodium azide, 50 % glycerol, pH 7.3

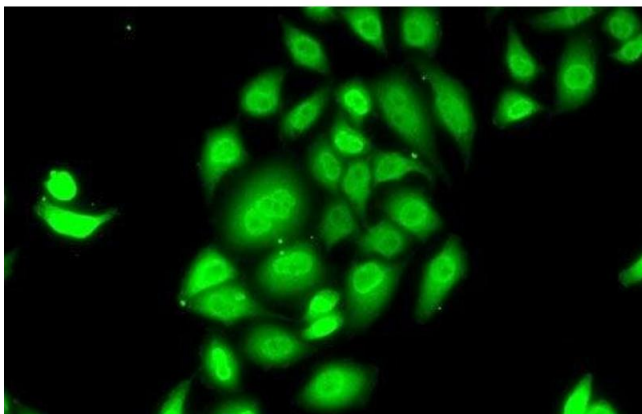
Preservative: Sodium azide

Precaution of Use: This product contains Sodium azide: a POISONOUS AND HAZARDOUS SUBSTANCE which should be handled by trained staff only.

Storage: -20 °C

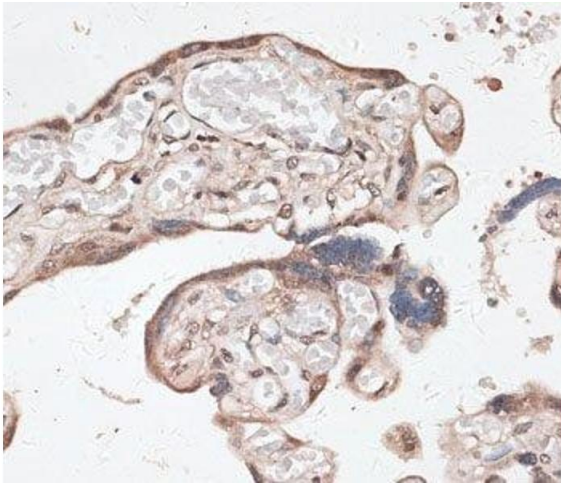
Storage Comment: Store at -20°C. Avoid freeze / thaw cycles.

## Images



### Immunofluorescence

**Image 1.** Immunofluorescence analysis of MCF7 cells using SPDEF Polyclonal Antibody



### Immunohistochemistry (Paraffin-embedded Sections)

**Image 2.** Immunohistochemistry of paraffin-embedded Human placenta using SPDEF Polyclonal Antibody at dilution of 1:100 (40x lens).