

Datasheet for ABIN7008662
anti-Nerve Growth Factor antibody

2 Images

[Go to Product page](#)

Overview

Quantity:	60 µL
Target:	Nerve Growth Factor (NGF)
Reactivity:	Human, Rat, Mouse
Host:	Rabbit
Clonality:	Polyclonal
Conjugate:	This Nerve Growth Factor antibody is un-conjugated
Application:	Western Blotting (WB), Immunofluorescence (IF)

Product Details

Immunogen:	Recombinant fusion protein of human NGF (NP_002497.2).
Isotype:	IgG
Characteristics:	Polyclonal Antibody
Purification:	Affinity purification

Target Details

Target:	Nerve Growth Factor (NGF)
Alternative Name:	NGF (NGF Products)
Background:	This gene is a member of the NGF-beta family and encodes a secreted protein which homodimerizes and is incorporated into a larger complex. This protein has nerve growth stimulating activity and the complex is involved in the regulation of growth and the differentiation of sympathetic and certain sensory neurons. Mutations in this gene have been

Target Details

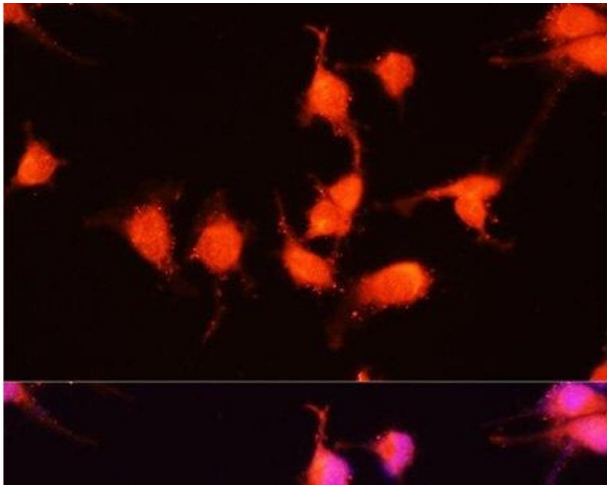
	associated with hereditary sensory and autonomic neuropathy, type 5 (HSAN5), and dysregulation of this gene's expression is associated with allergic rhinitis.
Molecular Weight:	Observed_MW: 30 kDa Calculated_MW: 26 kDa
Gene ID:	4803
UniProt:	P01138
Pathways:	Regulation of Cell Size

Application Details

Application Notes:	WB 1:500-1:1000 IF 1:50-1:100
Restrictions:	For Research Use only

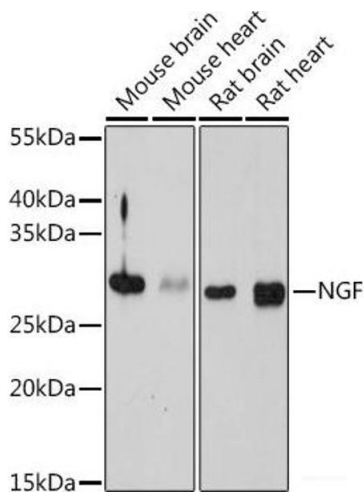
Handling

Format:	Liquid
Concentration:	1 mg/mL
Buffer:	PBS with 0.02 % sodium azide, 50 % glycerol, pH 7.3
Preservative:	Sodium azide
Precaution of Use:	This product contains Sodium azide: a POISONOUS AND HAZARDOUS SUBSTANCE which should be handled by trained staff only.
Storage:	-20 °C
Storage Comment:	Store at -20°C. Avoid freeze / thaw cycles.



Immunofluorescence

Image 1. Immunofluorescence analysis of U-251MG cells using NGF Polyclonal Antibody at dilution of 1:100 (40x lens). Blue: DAPI for nuclear staining.



Western Blotting

Image 2. Western blot analysis of extracts of various cell lines using NGF Polyclonal Antibody at dilution of 1:1000.