

Datasheet for ABIN7009013  
**anti-KLHDC2 antibody**



[Go to Product page](#)

1 Image

### Overview

Quantity:	60 µL
Target:	KLHDC2
Reactivity:	Rat
Host:	Rabbit
Clonality:	Polyclonal
Application:	Western Blotting (WB)

### Product Details

Immunogen:	Recombinant fusion protein of human KLHDC2 (NP_055130.1).
Isotype:	IgG
Characteristics:	Polyclonal Antibody
Purification:	Affinity purification

### Target Details

Target:	KLHDC2
Alternative Name:	KLHDC2 ( <a href="#">KLHDC2 Products</a> )
Background:	Represses CREB3-mediated transcription by interfering with CREB3-DNA binding.
Molecular Weight:	Observed_MW: 46 kDa Calculated_MW: 28 kDa/46 kDa
Gene ID:	23588

## Target Details

UniProt: [Q9Y2U9](#)

## Application Details

Application Notes: WB 1:500-1:2000

Restrictions: For Research Use only

## Handling

Format: Liquid

Concentration: 1 mg/mL

Buffer: PBS with 0.02 % sodium azide, 50 % glycerol, pH 7.3

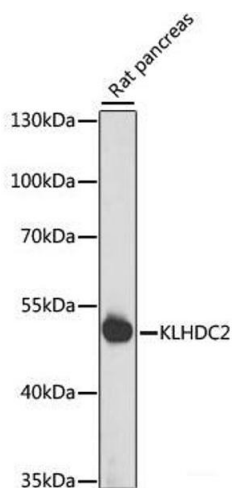
Preservative: Sodium azide

Precaution of Use: This product contains Sodium azide: a POISONOUS AND HAZARDOUS SUBSTANCE which should be handled by trained staff only.

Storage: -20 °C

Storage Comment: Store at -20°C. Avoid freeze / thaw cycles.

## Images



### Western Blotting

**Image 1.** Western blot analysis of extracts of Rat pancreas using KLHDC2 Polyclonal Antibody at dilution of 1:1000.