



[Go to Product page](#)

Datasheet for ABIN7009050

## anti-Phenylalanine Hydroxylase antibody

### 2 Images

#### Overview

Quantity:	60 µL
Target:	Phenylalanine Hydroxylase
Reactivity:	Human, Mouse, Rat
Host:	Rabbit
Clonality:	Polyclonal
Conjugate:	This Phenylalanine Hydroxylase antibody is un-conjugated
Application:	Western Blotting (WB), Immunofluorescence (IF)

#### Product Details

Immunogen:	Recombinant fusion protein of human PAH (NP_000268.1).
Isotype:	IgG
Characteristics:	Polyclonal Antibody
Purification:	Affinity purification

#### Target Details

Target:	Phenylalanine Hydroxylase
Alternative Name:	PAH ( <a href="#">Phenylalanine Hydroxylase Products</a> )
Background:	PAH encodes the enzyme phenylalanine hydroxylase that is the rate-limiting step in phenylalanine catabolism. Deficiency of this enzyme activity results in the autosomal recessive disorder phenylketonuria.

## Target Details

Molecular Weight: Observed\_MW: 55 kDa  
Calculated\_MW: 51 kDa

Gene ID: 5053

UniProt: [P00439](#)

## Application Details

Application Notes: WB 1:500-1:2000 IF 1:50-1:200

Restrictions: For Research Use only

## Handling

Format: Liquid

Concentration: 1 mg/mL

Buffer: PBS with 0.02 % sodium azide, 50 % glycerol, pH 7.3

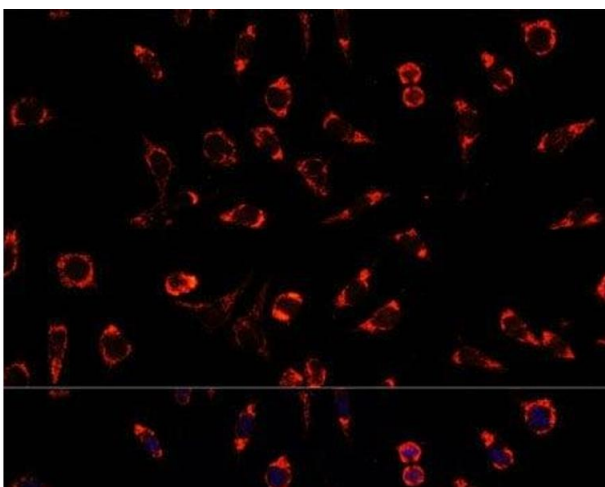
Preservative: Sodium azide

Precaution of Use: This product contains Sodium azide: a POISONOUS AND HAZARDOUS SUBSTANCE which should be handled by trained staff only.

Storage: -20 °C

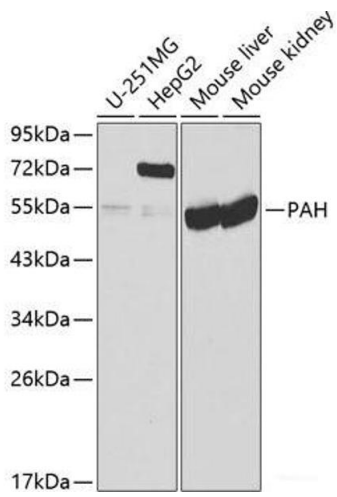
Storage Comment: Store at -20°C. Avoid freeze / thaw cycles.

## Images



### Immunofluorescence

**Image 1.** Immunofluorescence analysis of L929 cells using PAH Polyclonal Antibody at dilution of 1:100. Blue: DAPI for nuclear staining.



### Western Blotting

**Image 2.** Western blot analysis of extracts of various cell lines using PAH Polyclonal Antibody at dilution of 1:1000.