



## Datasheet for ABIN7009232 anti-GABRD antibody



[Go to Product page](#)

### 1 Image

#### Overview

Quantity:	60 µL
Target:	GABRD
Reactivity:	Human, Mouse, Rat
Host:	Rabbit
Clonality:	Polyclonal
Conjugate:	This GABRD antibody is un-conjugated
Application:	Western Blotting (WB)

#### Product Details

Immunogen:	Recombinant fusion protein of human GABRD (NP_000806.2).
Isotype:	IgG
Characteristics:	Polyclonal Antibody
Purification:	Affinity purification

#### Target Details

Target:	GABRD
Alternative Name:	GABRD ( <a href="#">GABRD Products</a> )
Background:	Gamma-aminobutyric acid (GABA) is the major inhibitory neurotransmitter in the mammalian brain where it acts at GABA-A receptors, which are ligand-gated chloride channels. Chloride conductance of these channels can be modulated by agents such as benzodiazepines that bind to the GABA-A receptor. The GABA-A receptor is generally pentameric and there are five types

## Target Details

---

of subunits: alpha, beta, gamma, delta, and rho. This gene encodes the delta subunit. Mutations in this gene have been associated with susceptibility to generalized epilepsy with febrile seizures, type 5. Alternatively spliced transcript variants have been described for this gene, but their biological validity has not been determined.

---

Molecular Weight: Observed\_MW: 68 kDa  
Calculated\_MW: 50 kDa

---

Gene ID: 2563

---

UniProt: [O14764](#)

## Application Details

---

Application Notes: WB 1:500-1:2000

---

Restrictions: For Research Use only

## Handling

---

Format: Liquid

---

Concentration: 1 mg/mL

---

Buffer: PBS with 0.02 % sodium azide, 50 % glycerol, pH 7.3

---

Preservative: Sodium azide

---

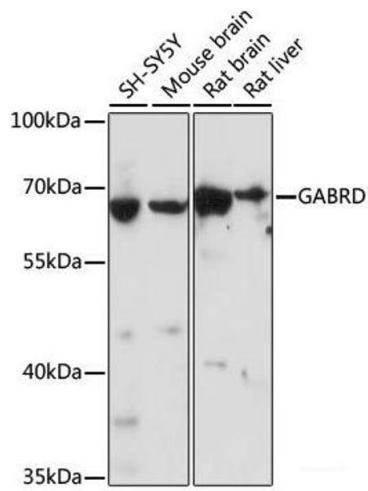
Precaution of Use: This product contains Sodium azide: a POISONOUS AND HAZARDOUS SUBSTANCE which should be handled by trained staff only.

---

Storage: -20 °C

---

Storage Comment: Store at -20°C. Avoid freeze / thaw cycles.



### Western Blotting

**Image 1.** Western blot analysis of extracts of various cell lines using GABRD Polyclonal Antibody at dilution of 1:1000.