

Datasheet for ABIN700930

## anti-SMC1A antibody (AA 151-250)



[Go to Product page](#)

### 2 Images

#### Overview

Quantity:	100 µL
Target:	SMC1A
Binding Specificity:	AA 151-250
Reactivity:	Human
Host:	Rabbit
Clonality:	Polyclonal
Conjugate:	This SMC1A antibody is un-conjugated
Application:	Western Blotting (WB), ELISA, Immunohistochemistry (Paraffin-embedded Sections) (IHC (p)), Flow Cytometry (FACS), Immunofluorescence (Cultured Cells) (IF (cc)), Immunofluorescence (Paraffin-embedded Sections) (IF (p)), Immunohistochemistry (Frozen Sections) (IHC (fro))

#### Product Details

Immunogen:	KLH conjugated synthetic peptide derived from human SMC1
Isotype:	IgG
Cross-Reactivity:	Human
Predicted Reactivity:	Mouse,Rat,Dog,Cow,Pig,Chicken,Rabbit
Purification:	Purified by Protein A.

#### Target Details

Target:	SMC1A
---------	-------

## Target Details

Alternative Name:	SMC1 ( <a href="#">SMC1A Products</a> )
Background:	<p>Synonyms: SMC1, SMCB, CDLS2, SB1.8, SMC1L1, DXS423E, SMC1alpha, Structural maintenance of chromosomes protein 1A, SMC protein 1A, SMC-1-alpha, SMC-1A, SMC1A, KIAA0178</p> <p>Background: Involved in chromosome cohesion during cell cycle and in DNA repair. Central component of cohesin complex. The cohesin complex is required for the cohesion of sister chromatids after DNA replication. The cohesin complex apparently forms a large proteinaceous ring within which sister chromatids can be trapped. At anaphase, the complex is cleaved and dissociates from chromatin, allowing sister chromatids to segregate. The cohesin complex may also play a role in spindle pole assembly during mitosis. Involved in DNA repair via its interaction with BRCA1 and its related phosphorylation by ATM, or via its phosphorylation by ATR. Works as a downstream effector both in the ATM/NBS1 branch and in the ATR/MSH2 branch of S-phase checkpoint.</p>
Gene ID:	8243
UniProt:	<a href="#">Q14683</a>
Pathways:	<a href="#">Stem Cell Maintenance</a>

## Application Details

Application Notes:	WB 1:300-5000 ELISA 1:500-1000 FCM 1:20-100 IHC-P 1:200-400 IHC-F 1:100-500 IF(IHC-P) 1:50-200 IF(IHC-F) 1:50-200 IF(ICC) 1:50-200
Restrictions:	For Research Use only

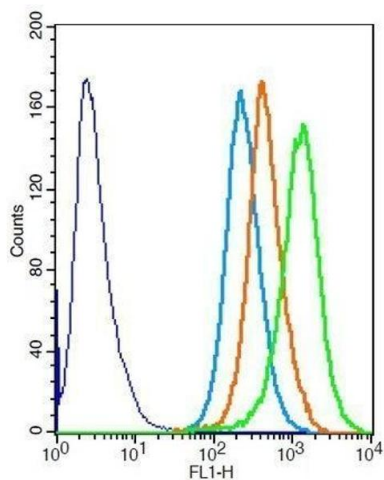
## Handling

Format:	Liquid
Concentration:	1 µg/µL
Buffer:	0.01M TBS( pH 7.4) with 1 % BSA, 0.02 % Proclin300 and 50 % Glycerol.

Handling

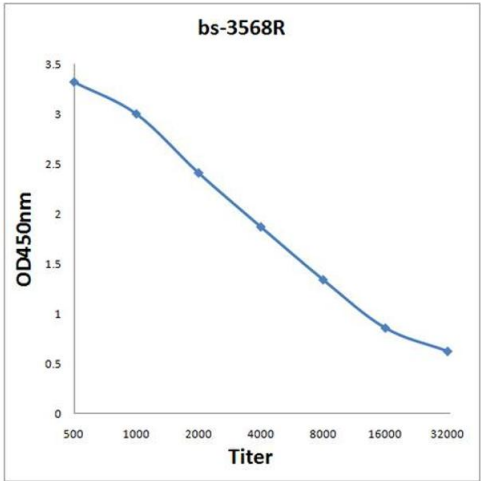
Preservative:	ProClin
Precaution of Use:	This product contains ProClin: a POISONOUS AND HAZARDOUS SUBSTANCE, which should be handled by trained staff only.
Storage:	4 °C,-20 °C
Storage Comment:	Shipped at 4°C. Store at -20°C for one year. Avoid repeated freeze/thaw cycles.
Expiry Date:	12 months

Images



Flow Cytometry

**Image 1.** Hela cells probed with Rabbit Anti-SMC1 Polyclonal Antibody .



ELISA

**Image 2.** Antigen: 0.2 µg/100 µL Primary: Antiserum, 1:500, 1:1000, 1:2000, 1:4000, 1:8000, 1:16000, 1:32000; Secondary: HRP conjugated Goat-Anti-Rabbit IgG at 1: 5000; TMB staining; Read the data in MicroplateReader by 450