

Datasheet for ABIN7009465

**anti-Epsin 2 antibody****1** Image[Go to Product page](#)

## Overview

Quantity:	60 µL
Target:	Epsin 2 (EPN2)
Reactivity:	Human, Mouse, Rat
Host:	Rabbit
Clonality:	Polyclonal
Conjugate:	This Epsin 2 antibody is un-conjugated
Application:	Western Blotting (WB)

## Product Details

Immunogen:	A synthetic peptide of mouse Epn2 (XP_006532226.1).
Isotype:	IgG
Characteristics:	Polyclonal Antibody
Purification:	Affinity purification

## Target Details

Target:	Epsin 2 (EPN2)
Alternative Name:	Epn2 ( <a href="#">EPN2 Products</a> )
Background:	This gene encodes a protein which interacts with clathrin and adaptor-related protein complex 2, alpha 1 subunit. The protein is found in a brain-derived clathrin-coated vesicle fraction and localizes to the peri-Golgi region and the cell periphery. The protein is thought to be involved in clathrin-mediated endocytosis. Alternate splicing of this gene results in multiple transcript

## Target Details

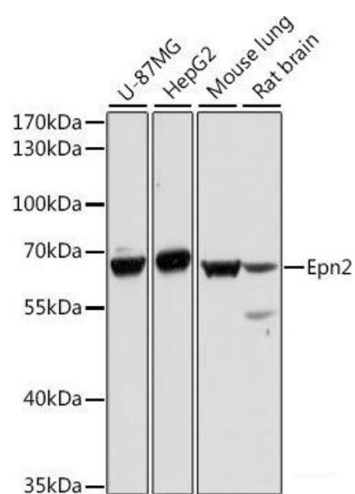
	variants encoding different isoforms.
Molecular Weight:	Observed_MW: 68 kDa Calculated_MW: 36 kDa/57 kDa/62 kDa/68 kDa
Gene ID:	13855
UniProt:	<a href="#">O95208</a>
Pathways:	<a href="#">EGFR Downregulation</a>

## Application Details

Application Notes:	WB 1:500-1:2000
Restrictions:	For Research Use only

## Handling

Format:	Liquid
Concentration:	1 mg/mL
Buffer:	PBS with 0.02 % sodium azide, 50 % glycerol, pH 7.3
Preservative:	Sodium azide
Precaution of Use:	This product contains Sodium azide: a POISONOUS AND HAZARDOUS SUBSTANCE which should be handled by trained staff only.
Storage:	-20 °C
Storage Comment:	Store at -20°C. Avoid freeze / thaw cycles.



Western Blotting

**Image 1.** Western blot analysis of extracts of various cell lines using Epn2 Polyclonal Antibody at dilution of 1:1000.