

Datasheet for ABIN7009503

anti-Surfeit 4 antibody**2** Images[Go to Product page](#)

Overview

| | |
|--------------|--|
| Quantity: | 60 µL |
| Target: | Surfeit 4 (SURF4) |
| Reactivity: | Mouse, Human, Rat |
| Host: | Rabbit |
| Clonality: | Polyclonal |
| Conjugate: | This Surfeit 4 antibody is un-conjugated |
| Application: | Immunohistochemistry (IHC) |

Product Details

| | |
|------------------|--|
| Immunogen: | A synthetic peptide of human SURF4 (NP_001267719.1). |
| Isotype: | IgG |
| Characteristics: | Polyclonal Antibody |
| Purification: | Affinity purification |

Target Details

| | |
|-------------------|---|
| Target: | Surfeit 4 (SURF4) |
| Alternative Name: | SURF4 (SURF4 Products) |
| Background: | This gene is located in the surfeit gene cluster, which is comprised of very tightly linked housekeeping genes that do not share sequence similarity. The encoded protein is a conserved integral membrane protein that interacts with endoplasmic reticulum-Golgi intermediate compartment proteins. Disruption of this gene results in reduced numbers of endoplasmic |

Target Details

reticulum-Golgi intermediate compartment clusters and redistribution of coat protein I to the cytosol. Alternate splicing results in multiple transcript variants.

Gene ID: 6836

UniProt: [O15260](#)

Application Details

Application Notes: IHC 1:50-1:200

Restrictions: For Research Use only

Handling

Format: Liquid

Concentration: 1 mg/mL

Buffer: PBS with 0.02 % sodium azide, 50 % glycerol, pH 7.3

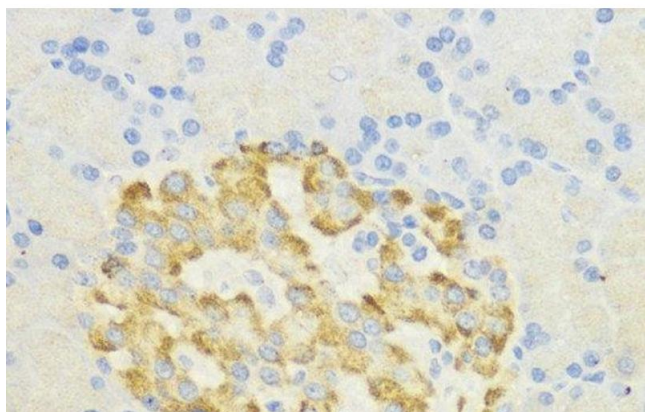
Preservative: Sodium azide

Precaution of Use: This product contains Sodium azide: a POISONOUS AND HAZARDOUS SUBSTANCE which should be handled by trained staff only.

Storage: -20 °C

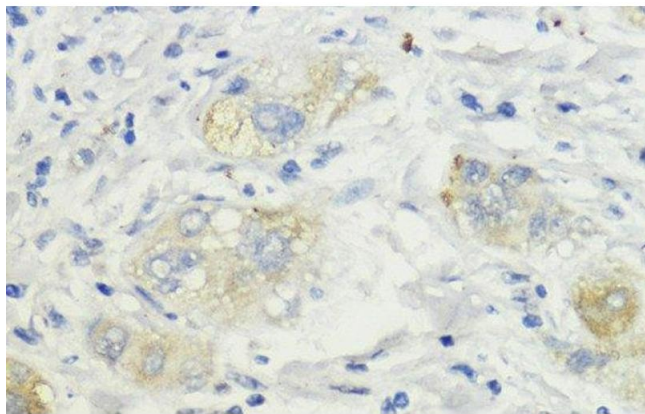
Storage Comment: Store at -20°C. Avoid freeze / thaw cycles.

Images



Immunohistochemistry (Paraffin-embedded Sections)

Image 1. Immunohistochemistry of paraffin-embedded Rat pancreatic islet using SURF4 Polyclonal Antibody at dilution of 1:200 (40x lens).



Immunohistochemistry (Paraffin-embedded Sections)

Image 2. Immunohistochemistry of paraffin-embedded Human liver cancer using SURF4 Polyclonal Antibody at dilution of 1:200 (40x lens).