

Datasheet for ABIN7009625

**anti-YKT6 antibody****1** Image[Go to Product page](#)

## Overview

Quantity:	60 µL
Target:	YKT6
Reactivity:	Rat
Host:	Rabbit
Clonality:	Polyclonal
Conjugate:	This YKT6 antibody is un-conjugated
Application:	Western Blotting (WB)

## Product Details

Immunogen:	A synthetic peptide of human YKT6.
Isotype:	IgG
Characteristics:	Polyclonal Antibody
Purification:	Affinity purification

## Target Details

Target:	YKT6
Alternative Name:	YKT6 ( <a href="#">YKT6 Products</a> )
Background:	This gene product is one of the SNARE recognition molecules implicated in vesicular transport between secretory compartments. It is a membrane associated, isoprenylated protein that functions at the endoplasmic reticulum-Golgi transport step. This protein is highly conserved from yeast to human and can functionally complement the loss of the yeast homolog in the

## Target Details

yeast secretory pathway.

Molecular Weight: Observed\_MW: 22 kDa  
Calculated\_MW: 22 kDa

Gene ID: 10652

UniProt: [O15498](#)

## Application Details

Application Notes: WB 1:500-1:2000

Restrictions: For Research Use only

## Handling

Format: Liquid

Concentration: 1 mg/mL

Buffer: PBS with 0.02 % sodium azide, 50 % glycerol, pH 7.3

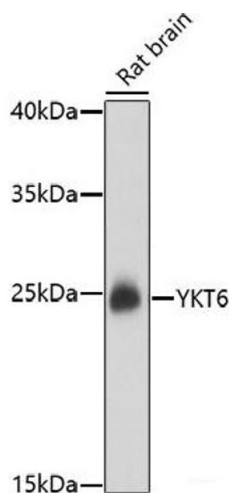
Preservative: Sodium azide

Precaution of Use: This product contains Sodium azide: a POISONOUS AND HAZARDOUS SUBSTANCE which should be handled by trained staff only.

Storage: -20 °C

Storage Comment: Store at -20°C. Avoid freeze / thaw cycles.

## Images



### Western Blotting

**Image 1.** Western blot analysis of extracts of Rat brain using YKT6 Polyclonal Antibody at dilution of 1:1000.