



## Datasheet for ABIN7009666 anti-PPP1R9B antibody



[Go to Product page](#)

### 1 Image

#### Overview

Quantity:	60 µL
Target:	PPP1R9B
Reactivity:	Human, Mouse
Host:	Rabbit
Clonality:	Polyclonal
Application:	Immunofluorescence (IF)

#### Product Details

Immunogen:	A synthetic peptide of human PPP1R9B.
Isotype:	IgG
Characteristics:	Polyclonal Antibody
Purification:	Affinity purification

#### Target Details

Target:	PPP1R9B
Alternative Name:	PPP1R9B ( <a href="#">PPP1R9B Products</a> )
Background:	This gene encodes a scaffold protein that functions as a regulatory subunit of protein phosphatase 1a. Expression of this gene is particularly high in dendritic spines, suggesting that the encoded protein may play a role in receiving signals from the central nervous system. The encoded protein has putative tumor suppressor function and decreased expression has been observed in tumors.

## Target Details

Gene ID:	84687
UniProt:	<a href="#">Q96SB3</a>
Pathways:	<a href="#">Regulation of G-Protein Coupled Receptor Protein Signaling</a>

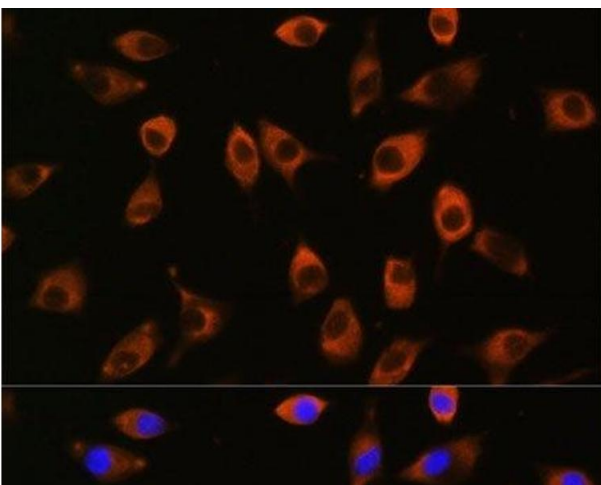
## Application Details

Application Notes:	IF 1:50-1:200
Restrictions:	For Research Use only

## Handling

Format:	Liquid
Concentration:	1 mg/mL
Buffer:	PBS with 0.02 % sodium azide, 50 % glycerol, pH 7.3
Preservative:	Sodium azide
Precaution of Use:	This product contains Sodium azide: a POISONOUS AND HAZARDOUS SUBSTANCE which should be handled by trained staff only.
Storage:	-20 °C
Storage Comment:	Store at -20°C. Avoid freeze / thaw cycles.

## Images



### Immunofluorescence

**Image 1.** Immunofluorescence analysis of L929 cells using PPP1R9B Polyclonal Antibody at dilution of 1:100. Blue: DAPI for nuclear staining.