

Datasheet for ABIN7009727

anti-VEGF antibody**3** Images[Go to Product page](#)

Overview

Quantity:	60 µL
Target:	VEGF
Reactivity:	Human, Mouse, Rat
Host:	Mouse
Clonality:	Monoclonal
Conjugate:	This VEGF antibody is un-conjugated
Application:	Western Blotting (WB), Immunohistochemistry (IHC)

Product Details

Immunogen:	Recombinant protein of human VEGFA
Isotype:	IgG
Characteristics:	Monoclonal Antibody
Purification:	Affinity purification

Target Details

Target:	VEGF
Alternative Name:	VEGF (VEGF Products)
Background:	This gene is a member of the PDGF/VEGF growth factor family. It encodes a heparin-binding protein, which exists as a disulfide-linked homodimer. This growth factor induces proliferation and migration of vascular endothelial cells, and is essential for both physiological and pathological angiogenesis. Disruption of this gene in mice resulted in abnormal embryonic

Target Details

blood vessel formation. This gene is upregulated in many known tumors and its expression is correlated with tumor stage and progression. Elevated levels of this protein are found in patients with POEMS syndrome, also known as Crow-Fukase syndrome. Allelic variants of this gene have been associated with microvascular complications of diabetes 1 (MVCD1) and atherosclerosis. Alternatively spliced transcript variants encoding different isoforms have been described. There is also evidence for alternative translation initiation from upstream non-AUG (CUG) codons resulting in additional isoforms. A recent study showed that a C-terminally extended isoform is produced by use of an alternative in-frame translation termination codon via a stop codon readthrough mechanism, and that this isoform is antiangiogenic. Expression of some isoforms derived from the AUG start codon is regulated by a small upstream open reading frame, which is located within an internal ribosome entry site.

Molecular Weight:	Observed_MW: 20 kDa Calculated_MW: 15-27 kDa/34-45 kDa
-------------------	---

Gene ID:	7422
----------	------

UniProt:	P15692
----------	------------------------

Application Details

Application Notes:	WB 1:500-1:1000 IHC 1:50-1:200
--------------------	--------------------------------

Restrictions:	For Research Use only
---------------	-----------------------

Handling

Format:	Liquid
---------	--------

Concentration:	1 mg/mL
----------------	---------

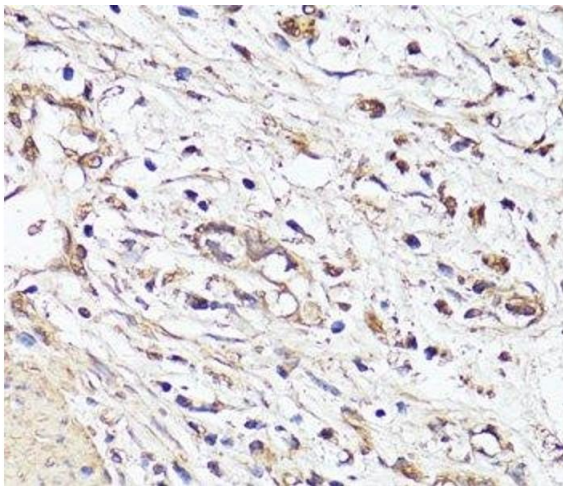
Buffer:	PBS with 0.02 % sodium azide, 50 % glycerol, pH 7.3
---------	---

Preservative:	Sodium azide
---------------	--------------

Precaution of Use:	This product contains Sodium azide: a POISONOUS AND HAZARDOUS SUBSTANCE which should be handled by trained staff only.
--------------------	--

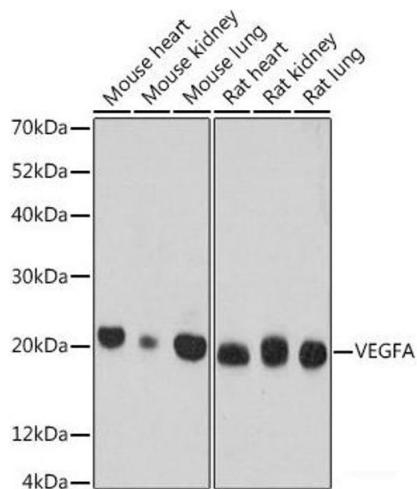
Storage:	-20 °C
----------	--------

Storage Comment:	Store at -20°C. Avoid freeze / thaw cycles.
------------------	---



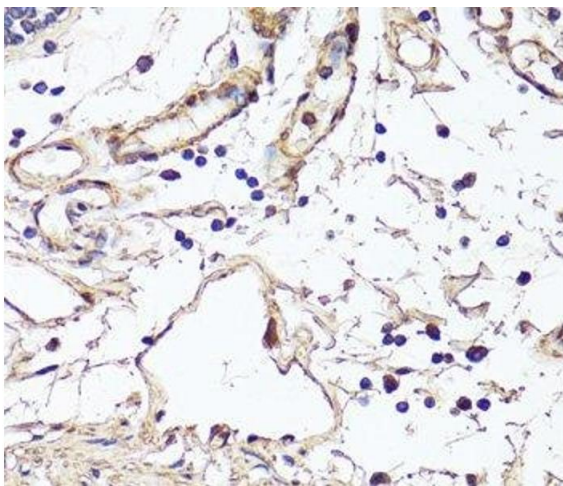
Immunohistochemistry (Paraffin-embedded Sections)

Image 1. Immunohistochemistry of paraffin-embedded Human stomach cancer using VEGF Monoclonal Antibody at dilution of 1:150 (40x lens).



Western Blotting

Image 2. Western blot analysis of extracts of various cell lines using VEGF Monoclonal Antibody at dilution of 1:500.



Immunohistochemistry (Paraffin-embedded Sections)

Image 3. Immunohistochemistry of paraffin-embedded Human colon using VEGF Monoclonal Antibody at dilution of 1:150 (40x lens).