

Datasheet for ABIN7009765

anti-C1QA antibody**1** Image[Go to Product page](#)

Overview

Quantity:	60 µL
Target:	C1QA
Reactivity:	Mouse
Host:	Rabbit
Clonality:	Polyclonal
Conjugate:	This C1QA antibody is un-conjugated
Application:	Western Blotting (WB)

Product Details

Immunogen:	Recombinant fusion protein of human C1QA (NP_057075.1).
Isotype:	IgG
Characteristics:	Polyclonal Antibody
Purification:	Affinity purification

Target Details

Target:	C1QA
Alternative Name:	C1QA (C1QA Products)
Background:	This gene encodes a major constituent of the human complement subcomponent C1q. C1q associates with C1r and C1s in order to yield the first component of the serum complement system. Deficiency of C1q has been associated with lupus erythematosus and glomerulonephritis. C1q is composed of 18 polypeptide chains: six A-chains, six B-chains, and

Target Details

six C-chains. Each chain contains a collagen-like region located near the N terminus and a C-terminal globular region. The A-, B-, and C-chains are arranged in the order A-C-B on chromosome 1. This gene encodes the A-chain polypeptide of human complement subcomponent C1q.

Molecular Weight: Observed_MW: 25 kDa
Calculated_MW: 26 kDa

Gene ID: 712

UniProt: [P02745](#)

Pathways: [Complement System](#)

Application Details

Application Notes: WB 1:500-1:2000

Restrictions: For Research Use only

Handling

Format: Liquid

Concentration: 1 mg/mL

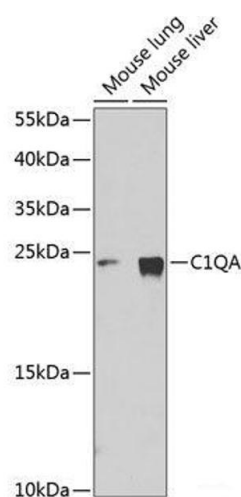
Buffer: PBS with 0.02 % sodium azide, 50 % glycerol, pH 7.3

Preservative: Sodium azide

Precaution of Use: This product contains Sodium azide: a POISONOUS AND HAZARDOUS SUBSTANCE which should be handled by trained staff only.

Storage: -20 °C

Storage Comment: Store at -20°C. Avoid freeze / thaw cycles.



Western Blotting

Image 1. Western blot analysis of extracts of various cell lines using C1QA Polyclonal Antibody at dilution of 1:1000.