

Datasheet for ABIN7009787

anti-SDC4 antibody**3** Images[Go to Product page](#)

Overview

Quantity:	60 µL
Target:	SDC4
Reactivity:	Human
Host:	Rabbit
Clonality:	Polyclonal
Conjugate:	This SDC4 antibody is un-conjugated
Application:	Western Blotting (WB), Immunohistochemistry (IHC)

Product Details

Immunogen:	Recombinant fusion protein of human SDC4 (NP_002990.2).
Isotype:	IgG
Characteristics:	Polyclonal Antibody
Purification:	Affinity purification

Target Details

Target:	SDC4
Alternative Name:	SDC4 (SDC4 Products)
Background:	The protein encoded by this gene is a transmembrane (type I) heparan sulfate proteoglycan that functions as a receptor in intracellular signaling. The encoded protein is found as a homodimer and is a member of the syndecan proteoglycan family. This gene is found on chromosome 20, while a pseudogene has been found on chromosome 22.

Target Details

Molecular Weight:	Observed_MW: 35 kDa
	Calculated_MW: 16 kDa/21 kDa
Gene ID:	6385
UniProt:	P31431
Pathways:	Glycosaminoglycan Metabolic Process

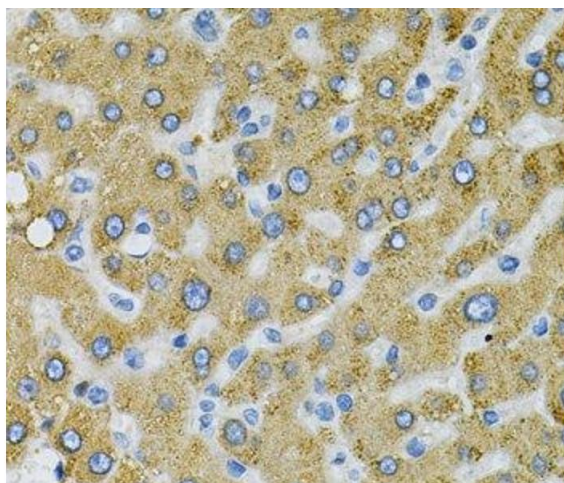
Application Details

Application Notes:	WB 1:500-1:2000 IHC 1:50-1:200
Restrictions:	For Research Use only

Handling

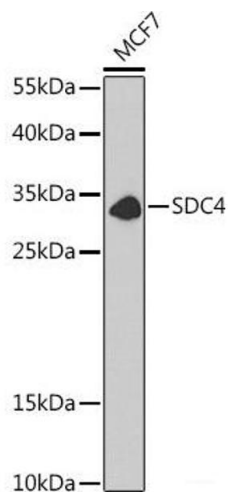
Format:	Liquid
Concentration:	1 mg/mL
Buffer:	PBS with 0.02 % sodium azide, 50 % glycerol, pH 7.3
Preservative:	Sodium azide
Precaution of Use:	This product contains Sodium azide: a POISONOUS AND HAZARDOUS SUBSTANCE which should be handled by trained staff only.
Storage:	-20 °C
Storage Comment:	Store at -20°C. Avoid freeze / thaw cycles.

Images



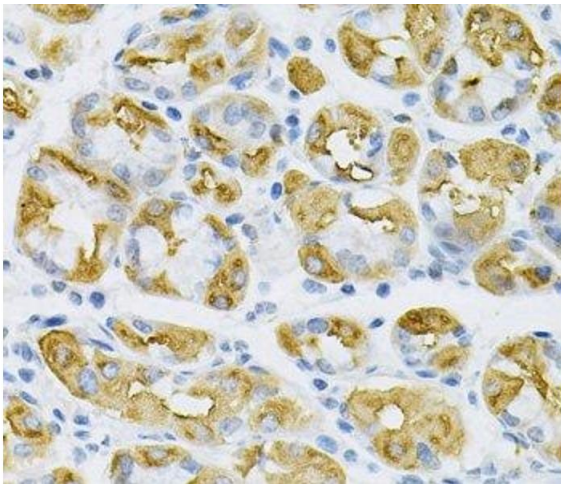
Immunohistochemistry (Paraffin-embedded Sections)

Image 1. Immunohistochemistry of paraffin-embedded Human liver damage using SDC4 Polyclonal Antibody at dilution of 1:100 (40x lens).



Western Blotting

Image 2. Western blot analysis of extracts of MCF7 cells using SDC4 Polyclonal Antibody at dilution of 1:1000.



Immunohistochemistry (Paraffin-embedded Sections)

Image 3. Immunohistochemistry of paraffin-embedded Human stomach using SDC4 Polyclonal Antibody at dilution of 1:100 (40x lens).