

Datasheet for ABIN700990
anti-SHC1 antibody (AA 481-583)

2 Images

[Go to Product page](#)

Overview

Quantity:	100 µL
Target:	SHC1
Binding Specificity:	AA 481-583
Reactivity:	Human
Host:	Rabbit
Clonality:	Polyclonal
Conjugate:	This SHC1 antibody is un-conjugated
Application:	Western Blotting (WB), ELISA

Product Details

Immunogen:	KLH conjugated synthetic peptide derived from human SHC
Isotype:	IgG
Cross-Reactivity:	Human
Predicted Reactivity:	Mouse,Rat,Dog,Cow,Pig,Horse
Purification:	Purified by Protein A.

Target Details

Target:	SHC1
Alternative Name:	SHC (SHC1 Products)
Background:	Synonyms: SHC, SHCA, SHC-transforming protein 1, SHC-transforming protein 3, SHC-

Target Details

transforming protein A, Src homology 2 domain-containing-transforming protein C1, SH2 domain protein C1, SHC1

Background: Signaling adapter that couples activated growth factor receptors to signaling pathways. Participates in a signaling cascade initiated by activated KIT and KITLG/SCF.

Isoform p46Shc and isoform p52Shc, once phosphorylated, couple activated receptor tyrosine kinases to Ras via the recruitment of the GRB2/SOS complex and are implicated in the cytoplasmic propagation of mitogenic signals. Isoform p46Shc and isoform p52Shc may thus function as initiators of the Ras signaling cascade in various non-neuronal systems. Isoform p66Shc does not mediate Ras activation, but is involved in signal transduction pathways that regulate the cellular response to oxidative stress and life span. Isoform p66Shc acts as a downstream target of the tumor suppressor p53 and is indispensable for the ability of stress-activated p53 to induce elevation of intracellular oxidants, cytochrome c release and apoptosis. The expression of isoform p66Shc has been correlated with life span (By similarity).

Participates in signaling downstream of the angiopoietin receptor TEK/TIE2, and plays a role in the regulation of endothelial cell migration and sprouting angiogenesis.

Gene ID: 6464

UniProt: [P29353](#)

Pathways: [RTK Signaling](#), [TCR Signaling](#), [Fc-epsilon Receptor Signaling Pathway](#), [EGFR Signaling Pathway](#), [Neurotrophin Signaling Pathway](#), [ER-Nucleus Signaling](#), [Signaling Events mediated by VEGFR1 and VEGFR2](#)

Application Details

Application Notes: WB 1:300-5000
ELISA 1:500-1000

Restrictions: For Research Use only

Handling

Format: Liquid

Concentration: 1 µg/µL

Buffer: 0.01M TBS(pH 7.4) with 1 % BSA, 0.02 % Proclin300 and 50 % Glycerol.

Preservative: ProClin

Precaution of Use: This product contains ProClin: a POISONOUS AND HAZARDOUS SUBSTANCE, which should be

Handling

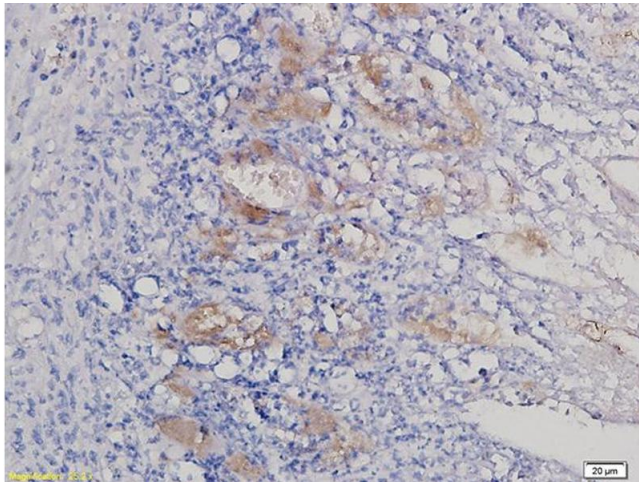
handled by trained staff only.

Storage: 4 °C, -20 °C

Storage Comment: Shipped at 4°C. Store at -20°C for one year. Avoid repeated freeze/thaw cycles.

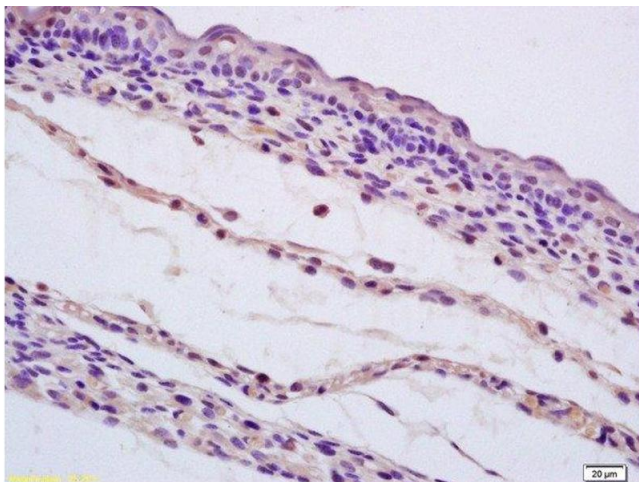
Expiry Date: 12 months

Images



Immunohistochemistry

Image 1. Formalin-fixed and paraffin embedded rat intestine labeled with Anti-SHC Polyclonal Antibody, Unconjugated (ABIN700990) at 1:200 followed by conjugation to the secondary antibody and DAB staining.



Immunohistochemistry (Paraffin-embedded Sections)

Image 2. Formalin-fixed and paraffin embedded mouse embryo labeled with Rabbit Anti SHC Polyclonal Antibody, Unconjugated at 1:200 followed by conjugation to the secondary antibody and DAB staining