

Datasheet for ABIN7009911

**anti-WDR5 antibody**[Go to Product page](#)**1** Image

## Overview

Quantity:	60 µL
Target:	WDR5
Reactivity:	Human, Mouse
Host:	Rabbit
Clonality:	Polyclonal
Application:	Immunohistochemistry (IHC)

## Product Details

Immunogen:	Recombinant fusion protein of human WDR5 (NP_438172.1).
Isotype:	IgG
Characteristics:	Polyclonal Antibody
Purification:	Affinity purification

## Target Details

Target:	WDR5
Alternative Name:	WDR5 ( <a href="#">WDR5 Products</a> )
Background:	This gene encodes a member of the WD repeat protein family. WD repeats are minimally conserved regions of approximately 40 amino acids typically bracketed by gly-his and trp-aspartic acid (GH-WD), which may facilitate formation of heterotrimeric or multiprotein complexes. Members of this family are involved in a variety of cellular processes, including cell cycle progression, signal transduction, apoptosis, and gene regulation. This protein contains 7 WD repeats.

## Target Details

Alternatively spliced transcript variants encoding the same protein have been identified.

Gene ID: 11091

UniProt: [P61964](#)

## Application Details

Application Notes: IHC 1:50-1:200

Restrictions: For Research Use only

## Handling

Format: Liquid

Concentration: 1 mg/mL

Buffer: PBS with 0.02 % sodium azide, 50 % glycerol, pH 7.3

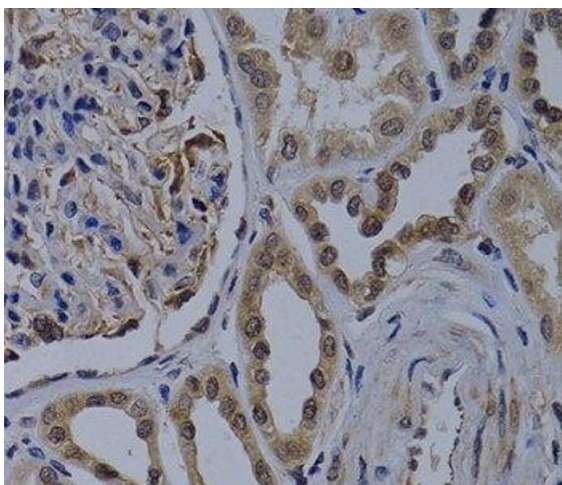
Preservative: Sodium azide

Precaution of Use: This product contains Sodium azide: a POISONOUS AND HAZARDOUS SUBSTANCE which should be handled by trained staff only.

Storage: -20 °C

Storage Comment: Store at -20°C. Avoid freeze / thaw cycles.

## Images



### Immunohistochemistry (Paraffin-embedded Sections)

**Image 1.** Immunohistochemistry of paraffin-embedded Human kidney cancer using WDR5 Polyclonal Antibody at dilution of 1:200 (40x lens).