

Datasheet for ABIN701020  
**anti-ADAM10 antibody (AA 501-600)**[Go to Product page](#)

1 Image

3 Publications

## Overview

Quantity:	100 µL
Target:	ADAM10
Binding Specificity:	AA 501-600
Reactivity:	Human, Rat, Mouse
Host:	Rabbit
Clonality:	Polyclonal
Conjugate:	This ADAM10 antibody is un-conjugated
Application:	Western Blotting (WB), ELISA, Immunofluorescence (Cultured Cells) (IF (cc)), Immunofluorescence (Paraffin-embedded Sections) (IF (p)), Immunohistochemistry (Paraffin- embedded Sections) (IHC (p)), Immunohistochemistry (Frozen Sections) (IHC (fro))

## Product Details

Immunogen:	KLH conjugated synthetic peptide derived from human ADAM10
Isotype:	IgG
Cross-Reactivity:	Human, Mouse, Rat
Predicted Reactivity:	Dog,Cow,Pig,Horse,Chicken,Rabbit
Purification:	Purified by Protein A.

## Target Details

Target:	ADAM10
---------	--------

## Target Details

Alternative Name:	ADAM10 ( <a href="#">ADAM10 Products</a> )
Background:	<p>Synonyms: RAK, kuz, AD10, AD18, MADM, CD156c, HsT18717, Disintegrin and metalloproteinase domain-containing protein 10, ADAM 10, CDw156, Kuzbanian protein homolog, Mammalian disintegrin-metalloprotease, ADAM10</p> <p>Background: Cleaves the membrane-bound precursor of TNF-alpha at '76-Ala- -Val-77' to its mature soluble form. Responsible for the proteolytical release of soluble JAM3 from endothelial cells surface. Responsible for the proteolytic release of several other cell-surface proteins, including heparin-binding epidermal growth-like factor, ephrin-A2 and for constitutive and regulated alpha-secretase cleavage of amyloid precursor protein (APP). Contributes to the normal cleavage of the cellular prion protein. Involved in the cleavage of the adhesion molecule L1 at the cell surface and in released membrane vesicles, suggesting a vesicle-based protease activity. Controls also the proteolytic processing of Notch and mediates lateral inhibition during neurogenesis. Responsible for the FasL ectodomain shedding and for the generation of the remnant ADAM10-processed FasL (FasL APL) transmembrane form. Also cleaves the ectodomain of the integral membrane proteins CORIN and ITM2B. May regulate the EFNA5-EPHA3 signaling.</p>
Gene ID:	102
UniProt:	<a href="#">O14672</a>
Pathways:	<a href="#">Notch Signaling</a> , <a href="#">EGFR Signaling Pathway</a>

## Application Details

Application Notes:	WB 1:300-5000 ELISA 1:500-1000 IHC-P 1:200-400 IHC-F 1:100-500 IF(IHC-P) 1:50-200 IF(IHC-F) 1:50-200 IF(ICC) 1:50-200
--------------------	---

Restrictions:	For Research Use only
---------------	-----------------------

## Handling

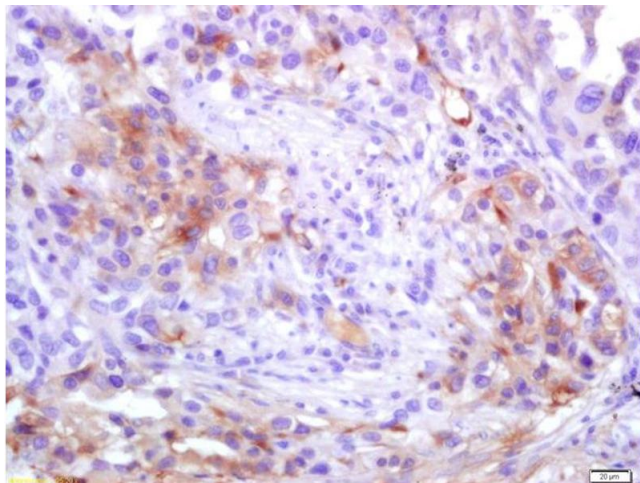
Format:	Liquid
Concentration:	1 µg/µL

## Handling

Buffer:	0.01M TBS( pH 7.4) with 1 % BSA, 0.02 % Proclin300 and 50 % Glycerol.
Preservative:	ProClin
Precaution of Use:	This product contains ProClin: a POISONOUS AND HAZARDOUS SUBSTANCE, which should be handled by trained staff only.
Storage:	4 °C,-20 °C
Storage Comment:	Shipped at 4°C. Store at -20°C for one year. Avoid repeated freeze/thaw cycles.
Expiry Date:	12 months

## Publications

Product cited in:	<p>Ku, Li, Gao, Zhang, Yan, Ji, Li, Sang: "NF-κB-regulated microRNA-574-5p underlies synaptic and cognitive impairment in response to atmospheric PM2.5 aspiration." in: <b>Particle and fibre toxicology</b>, Vol. 14, Issue 1, pp. 34, (2018) (<a href="#">PubMed</a>).</p> <p>Angenendt, Reuter, Kentrup, Benk, Neumann, Hüve, Martens, Schwöppe, Kessler, Schmidt, Sauer, Brand, Mikesch, Lenz, Mesters, Müller-Tidow, Hartmann, Wardelmann, Neri, Berdel, Roesli, Schliemann: "An atlas of bloodstream-accessible bone marrow proteins for site-directed therapy of acute myeloid leukemia." in: <b>Leukemia</b>, Vol. 32, Issue 2, pp. 510-519, (2017) (<a href="#">PubMed</a>).</p> <p>Li, Xie, He, Wang, Duan, Yang, Wang: "Identification of ADAM10 and ADAM17 with potential roles in the spermatogenesis of the Chinese mitten crab, <i>Eriocheir sinensis</i>." in: <b>Gene</b>, Vol. 562, Issue 1, pp. 117-27, (2015) (<a href="#">PubMed</a>).</p>
-------------------	--



#### Immunohistochemistry

**Image 1.** Formalin-fixed and paraffin embedded human lung carcinoma labeled with Anti-ADAM10 Polyclonal Antibody, Unconjugated (ABIN701020) at 1:200 followed by conjugation to the secondary antibody and DAB staining