



Datasheet for ABIN7010240

anti-SKI antibody



[Go to Product page](#)

1 Image

Overview

Quantity:	60 µL
Target:	SKI
Reactivity:	Human, Mouse, Rat
Host:	Rabbit
Clonality:	Polyclonal
Application:	Western Blotting (WB)

Product Details

Immunogen:	A synthetic peptide of human SKI
Isotype:	IgG
Characteristics:	Polyclonal Antibody
Purification:	Affinity purification

Target Details

Target:	SKI
Alternative Name:	SKI (SKI Products)
Background:	This gene encodes the nuclear protooncogene protein homolog of avian sarcoma viral (v-ski) oncogene. It functions as a repressor of TGF-beta signaling, and may play a role in neural tube development and muscle differentiation.
Molecular Weight:	Observed_MW: 85 kDa Calculated_MW: 80 kDa

Target Details

Gene ID:	6497
UniProt:	P12755
Pathways:	Stem Cell Maintenance , Tube Formation , Skeletal Muscle Fiber Development

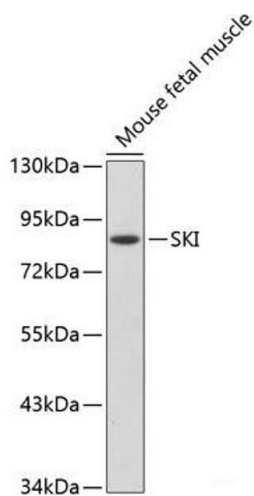
Application Details

Application Notes:	WB 1:500-1:1000
Restrictions:	For Research Use only

Handling

Format:	Liquid
Concentration:	1 mg/mL
Buffer:	PBS with 0.02 % sodium azide, 50 % glycerol, pH 7.3
Preservative:	Sodium azide
Precaution of Use:	This product contains Sodium azide: a POISONOUS AND HAZARDOUS SUBSTANCE which should be handled by trained staff only.
Storage:	-20 °C
Storage Comment:	Store at -20°C. Avoid freeze / thaw cycles.

Images



Western Blotting

Image 1. Western blot analysis of extracts of Mouse fetal muscle using SKI Polyclonal Antibody.