

Datasheet for ABIN7010242

anti-GJC2 antibody**2** Images[Go to Product page](#)

Overview

Quantity:	60 µL
Target:	GJC2
Reactivity:	Human, Mouse, Rat
Host:	Rabbit
Clonality:	Polyclonal
Conjugate:	This GJC2 antibody is un-conjugated
Application:	Western Blotting (WB), Immunohistochemistry (IHC)

Product Details

Immunogen:	A synthetic peptide of human GJC2
Isotype:	IgG
Characteristics:	Polyclonal Antibody
Purification:	Affinity purification

Target Details

Target:	GJC2
Alternative Name:	GJC2 (GJC2 Products)
Background:	This gene encodes a gap junction protein. Gap junction proteins are members of a large family of homologous connexins and comprise 4 transmembrane, 2 extracellular, and 3 cytoplasmic domains. This gene plays a key role in central myelination and is involved in peripheral myelination in humans. Defects in this gene are the cause of autosomal recessive Pelizaeus-

Target Details

Merzbacher-like disease-1.

Molecular Weight: Observed_MW: 47 kDa
Calculated_MW: 47 kDa

Gene ID: 57165

UniProt: [Q5T442](#)

Application Details

Application Notes: WB 1:500-1:2000 IHC 1:50-1:200

Restrictions: For Research Use only

Handling

Format: Liquid

Concentration: 1 mg/mL

Buffer: PBS with 0.02 % sodium azide, 50 % glycerol, pH 7.3

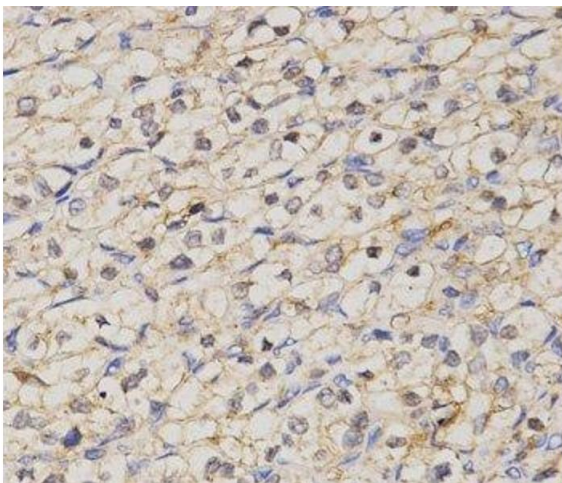
Preservative: Sodium azide

Precaution of Use: This product contains Sodium azide: a POISONOUS AND HAZARDOUS SUBSTANCE which should be handled by trained staff only.

Storage: -20 °C

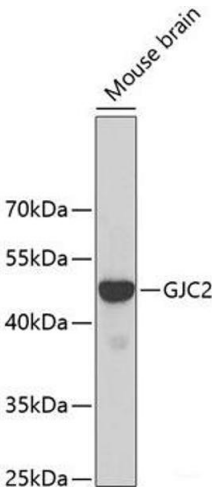
Storage Comment: Store at -20°C. Avoid freeze / thaw cycles.

Images



Immunohistochemistry (Paraffin-embedded Sections)

Image 1. Immunohistochemistry of paraffin-embedded Human kidney cancer using GJC2 Polyclonal Antibody at dilution of 1:200 (40x lens).



Western Blotting

Image 2. Western blot analysis of extracts of Mouse brain using GJC2 Polyclonal Antibody at dilution of 1:500.