

Datasheet for ABIN7010306

**anti-PAWR antibody**

3 Images

[Go to Product page](#)

## Overview

Quantity:	60 µL
Target:	PAWR
Reactivity:	Human, Mouse, Rat
Host:	Rabbit
Clonality:	Polyclonal
Conjugate:	This PAWR antibody is un-conjugated
Application:	Western Blotting (WB), Immunohistochemistry (IHC)

## Product Details

Immunogen:	Recombinant protein of human PAWR
Isotype:	IgG
Characteristics:	Polyclonal Antibody
Purification:	Affinity purification

## Target Details

Target:	PAWR
Alternative Name:	PAWR ( <a href="#">PAWR Products</a> )
Background:	The tumor suppressor WT1 represses and activates transcription. The protein encoded by this gene is a WT1-interacting protein that itself functions as a transcriptional repressor. It contains a putative leucine zipper domain which interacts with the zinc finger DNA binding domain of WT1. This protein is specifically upregulated during apoptosis of prostate cells.

## Target Details

Molecular Weight: Observed\_MW: 43 kDa  
Calculated\_MW: 36 kDa

Gene ID: 5074

UniProt: [Q96IZ0](#)

## Application Details

Application Notes: WB 1:500-1:2000 IHC 1:50-1:100

Restrictions: For Research Use only

## Handling

Format: Liquid

Concentration: 1 mg/mL

Buffer: PBS with 0.02 % sodium azide, 50 % glycerol, pH 7.3

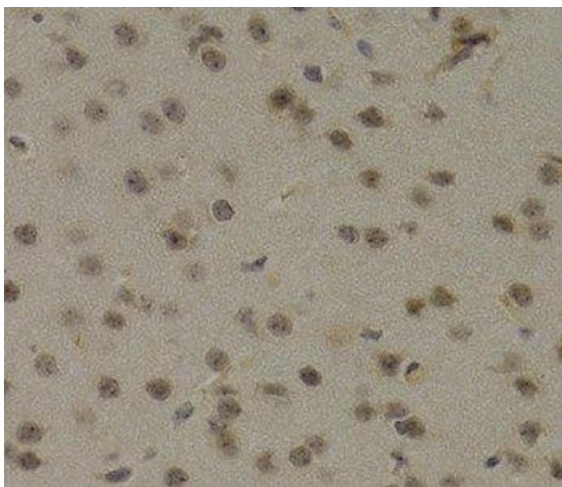
Preservative: Sodium azide

Precaution of Use: This product contains Sodium azide: a POISONOUS AND HAZARDOUS SUBSTANCE which should be handled by trained staff only.

Storage: -20 °C

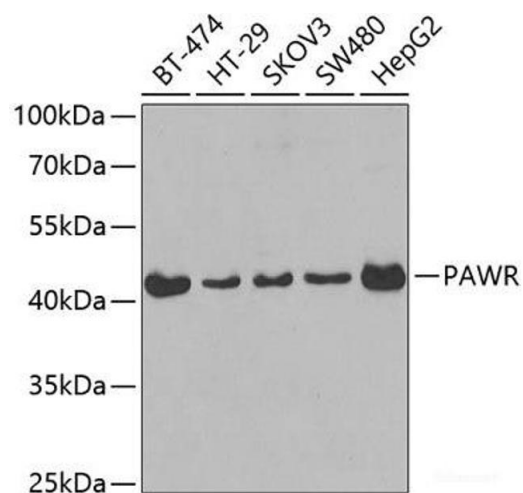
Storage Comment: Store at -20°C. Avoid freeze / thaw cycles.

## Images



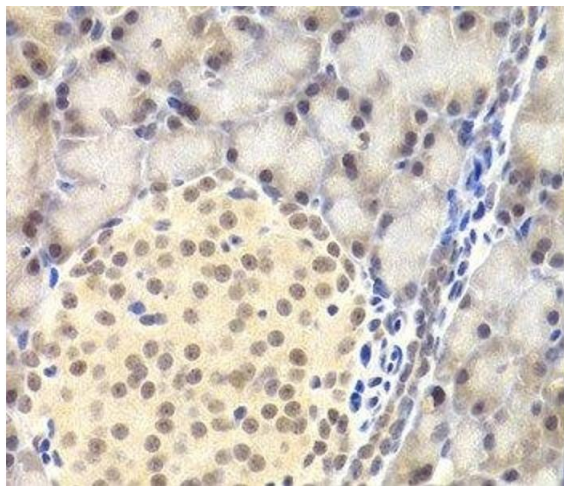
### Immunohistochemistry (Paraffin-embedded Sections)

**Image 1.** Immunohistochemistry of paraffin-embedded Mouse brain using PAWR Polyclonal Antibody at dilution of 1:200 (40x lens).



#### Western Blotting

**Image 2.** Western blot analysis of extracts of various cell lines using PAWR Polyclonal Antibody at dilution of 1:400.



#### Immunohistochemistry (Paraffin-embedded Sections)

**Image 3.** Immunohistochemistry of paraffin-embedded Rat pancreas using PAWR Polyclonal Antibody at dilution of 1:200 (40x lens).