



[Go to Product page](#)

Datasheet for ABIN7010326

anti-OPRL1 antibody

1 Image

Overview

Quantity:	60 µL
Target:	OPRL1
Reactivity:	Human
Host:	Rabbit
Clonality:	Polyclonal
Conjugate:	This OPRL1 antibody is un-conjugated
Application:	Western Blotting (WB)

Product Details

Immunogen:	A synthetic peptide of human OPRL1
Isotype:	IgG
Characteristics:	Polyclonal Antibody
Purification:	Affinity purification

Target Details

Target:	OPRL1
Alternative Name:	OPRL1 (OPRL1 Products)
Background:	The protein encoded by this gene is a member of the 7 transmembrane-spanning G protein-coupled receptor family, and functions as a receptor for the endogenous, opioid-related neuropeptide, nociceptin/orphanin FQ. This receptor-ligand system modulates a variety of biological functions and neurobehavior, including stress responses and anxiety behavior,

Target Details

learning and memory, locomotor activity, and inflammatory and immune responses. A promoter region between this gene and the 5'-adjacent RGS19 (regulator of G-protein signaling 19) gene on the opposite strand functions bi-directionally as a core-promoter for both genes, suggesting co-operative transcriptional regulation of these two functionally related genes. Alternatively spliced transcript variants have been described for this gene. A recent study provided evidence for translational readthrough in this gene and expression of an additional C-terminally extended isoform via the use of an alternative in-frame translation termination codon.

Molecular Weight:	Observed_MW: 50 kDa Calculated_MW: 40 kDa
-------------------	--

Gene ID:	4987
----------	------

UniProt:	P41146
----------	------------------------

Application Details

Application Notes:	WB 1:500-1:2000
--------------------	-----------------

Restrictions:	For Research Use only
---------------	-----------------------

Handling

Format:	Liquid
---------	--------

Concentration:	1 mg/mL
----------------	---------

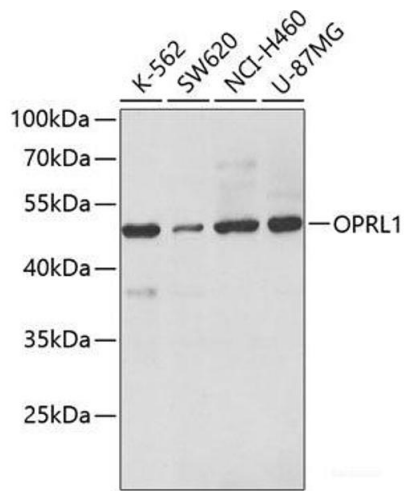
Buffer:	PBS with 0.02 % sodium azide, 50 % glycerol, pH 7.3
---------	---

Preservative:	Sodium azide
---------------	--------------

Precaution of Use:	This product contains Sodium azide: a POISONOUS AND HAZARDOUS SUBSTANCE which should be handled by trained staff only.
--------------------	--

Storage:	-20 °C
----------	--------

Storage Comment:	Store at -20°C. Avoid freeze / thaw cycles.
------------------	---



Western Blotting

Image 1. Western blot analysis of extracts of various cell lines using OPRL1 Polyclonal Antibody at dilution of 1:500.