

Datasheet for ABIN7010580

**anti-HDGF antibody****6** Images[Go to Product page](#)

## Overview

Quantity:	60 µL
Target:	HDGF
Reactivity:	Human, Mouse, Rat
Host:	Rabbit
Clonality:	Polyclonal
Conjugate:	This HDGF antibody is un-conjugated
Application:	Western Blotting (WB), Immunohistochemistry (IHC), Immunofluorescence (IF)

## Product Details

Immunogen:	Recombinant fusion protein of human HDGF (NP_004485.1).
Isotype:	IgG
Characteristics:	Polyclonal Antibody
Purification:	Affinity purification

## Target Details

Target:	HDGF
Alternative Name:	HDGF ( <a href="#">HDGF Products</a> )
Background:	This gene encodes a member of the hepatoma-derived growth factor family. The encoded protein has mitogenic and DNA-binding activity and may play a role in cellular proliferation and differentiation. High levels of expression of this gene enhance the growth of many tumors. This gene was thought initially to be located on chromosome X, however, that location has been

## Target Details

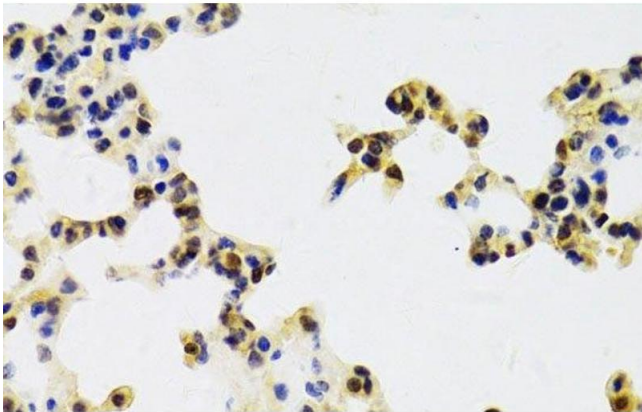
	determined to correspond to a related pseudogene. Alternatively spliced transcript variants encoding distinct isoforms have been described.
Molecular Weight:	Observed_MW: 38 kDa Calculated_MW: 25 kDa/26 kDa/28 kDa
Gene ID:	3068
UniProt:	<a href="#">P51858</a>
Pathways:	<a href="#">ER-Nucleus Signaling</a>

## Application Details

Application Notes:	WB 1:500-1:2000 IHC 1:50-1:200 IF 1:50-1:200
Restrictions:	For Research Use only

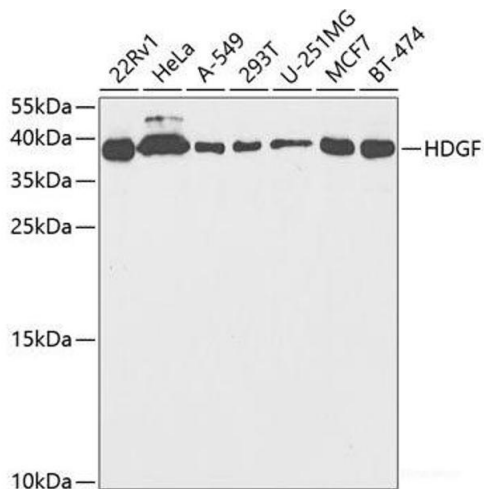
## Handling

Format:	Liquid
Concentration:	1 mg/mL
Buffer:	PBS with 0.02 % sodium azide, 50 % glycerol, pH 7.3
Preservative:	Sodium azide
Precaution of Use:	This product contains Sodium azide: a POISONOUS AND HAZARDOUS SUBSTANCE which should be handled by trained staff only.
Storage:	-20 °C
Storage Comment:	Store at -20°C. Avoid freeze / thaw cycles.



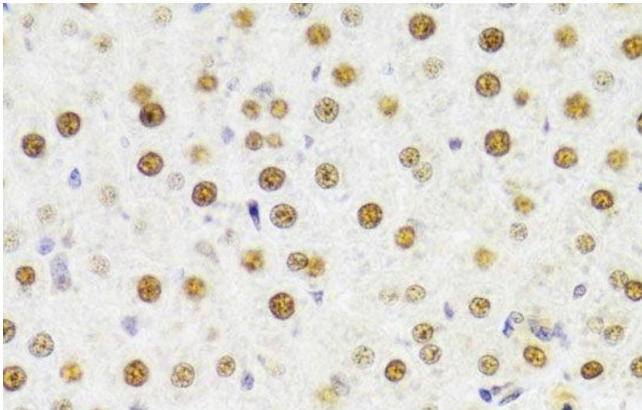
**Immunohistochemistry (Paraffin-embedded Sections)**

**Image 1.** Immunohistochemistry of paraffin-embedded Mouse lung using HDGF Polyclonal Antibody at dilution of 1:100 (40x lens).



**Western Blotting**

**Image 2.** Western blot analysis of extracts of various cell lines using HDGF Polyclonal Antibody at dilution of 1:1000.



**Immunohistochemistry (Paraffin-embedded Sections)**

**Image 3.** Immunohistochemistry of paraffin-embedded Rat liver using HDGF Polyclonal Antibody at dilution of 1:100 (40x lens).

Please check the [product details page](#) for more images. Overall 6 images are available for ABIN7010580.