



Datasheet for ABIN7010582 anti-IMPDH2 antibody



[Go to Product page](#)

1 Image

Overview

Quantity:	60 µL
Target:	IMPDH2
Reactivity:	Human, Mouse
Host:	Rabbit
Clonality:	Polyclonal
Conjugate:	This IMPDH2 antibody is un-conjugated
Application:	Immunofluorescence (IF)

Product Details

Immunogen:	Recombinant fusion protein of human IMPDH2 (NP_000875.2).
Isotype:	IgG
Characteristics:	Polyclonal Antibody
Purification:	Affinity purification

Target Details

Target:	IMPDH2
Alternative Name:	IMPDH2 (IMPDH2 Products)
Background:	This gene encodes the rate-limiting enzyme in the de novo guanine nucleotide biosynthesis. It is thus involved in maintaining cellular guanine deoxy- and ribonucleotide pools needed for DNA and RNA synthesis. The encoded protein catalyzes the NAD-dependent oxidation of inosine-5'-monophosphate into xanthine-5'-monophosphate, which is then converted into guanosine-5'-

Target Details

monophosphate. This gene is up-regulated in some neoplasms, suggesting it may play a role in malignant transformation.

Gene ID: 3615

UniProt: [P12268](#)

Pathways: [Ribonucleoside Biosynthetic Process](#), [SARS-CoV-2 Protein Interactome](#)

Application Details

Application Notes: IF 1:50-1:200

Restrictions: For Research Use only

Handling

Format: Liquid

Concentration: 1 mg/mL

Buffer: PBS with 0.02 % sodium azide, 50 % glycerol, pH 7.3

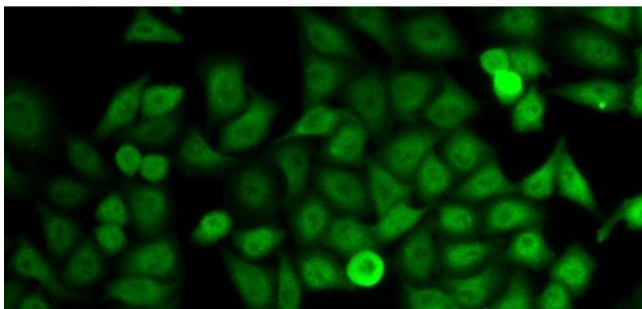
Preservative: Sodium azide

Precaution of Use: This product contains Sodium azide: a POISONOUS AND HAZARDOUS SUBSTANCE which should be handled by trained staff only.

Storage: -20 °C

Storage Comment: Store at -20°C. Avoid freeze / thaw cycles.

Images



Immunofluorescence

Image 1. Immunofluorescence analysis of HeLa cells using IMPDH2 Polyclonal Antibody