

Datasheet for ABIN701065
anti-SLC11A2 antibody (AA 251-350)[3 Images](#)[2 Publications](#)[Go to Product page](#)

Overview

Quantity:	100 µL
Target:	SLC11A2
Binding Specificity:	AA 251-350
Reactivity:	Human, Mouse, Rat, Chicken
Host:	Rabbit
Clonality:	Polyclonal
Conjugate:	This SLC11A2 antibody is un-conjugated
Application:	ELISA, Western Blotting (WB), Immunofluorescence (Cultured Cells) (IF (cc)), Immunofluorescence (Paraffin-embedded Sections) (IF (p)), Immunohistochemistry (Paraffin-embedded Sections) (IHC (p)), Flow Cytometry (FACS), Immunohistochemistry (Frozen Sections) (IHC (fro))

Product Details

Immunogen:	KLH conjugated synthetic peptide derived from human SLC11A2
Isotype:	IgG
Cross-Reactivity:	Chicken, Human, Mouse, Rat
Predicted Reactivity:	Cow
Purification:	Purified by Protein A.

Target Details

Target:	SLC11A2
---------	---------

Target Details

Alternative Name:	SLC11A2 (SLC11A2 Products)
Background:	<p>Synonyms: DCT1, DMT1, NRAMP2, Natural resistance-associated macrophage protein 2, NRAMP 2, Divalent cation transporter 1, Divalent metal transporter 1, DMT-1, Solute carrier family 11 member 2, SLC11A2, OK/SW-cl.20</p> <p>Background: Important in metal transport, in particular iron. Can also transport manganese, cobalt, cadmium, nickel, vanadium and lead. Involved in apical iron uptake into duodenal enterocytes. Involved in iron transport from acidified endosomes into the cytoplasm of erythroid precursor cells. May play an important role in hepatic iron accumulation and tissue iron distribution. May serve to import iron into the mitochondria.</p>
Gene ID:	4891
UniProt:	P49281
Pathways:	Transition Metal Ion Homeostasis , Proton Transport , Positive Regulation of Endopeptidase Activity

Application Details

Application Notes:	WB 1:300-5000 ELISA 1:500-1000 FCM 1:20-100 IHC-P 1:200-400 IHC-F 1:100-500 IF(IHC-P) 1:50-200 IF(IHC-F) 1:50-200 IF(ICC) 1:50-200
Restrictions:	For Research Use only

Handling

Format:	Liquid
Concentration:	1 µg/µL
Buffer:	0.01M TBS(pH 7.4) with 1 % BSA, 0.02 % Proclin300 and 50 % Glycerol.
Preservative:	ProClin
Precaution of Use:	This product contains ProClin: a POISONOUS AND HAZARDOUS SUBSTANCE, which should be handled by trained staff only.

Handling

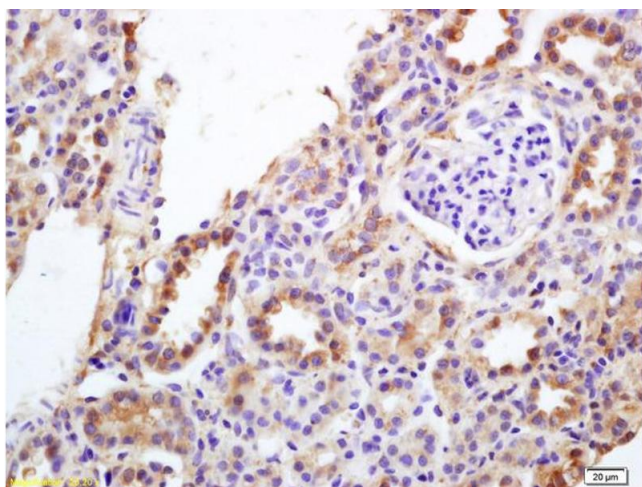
Storage:	4 °C, -20 °C
Storage Comment:	Shipped at 4°C. Store at -20°C for one year. Avoid repeated freeze/thaw cycles.
Expiry Date:	12 months

Publications

Product cited in: Zhang, Li, Liao, Zhang, Lu, Luo: "Effect of iron source on iron absorption and gene expression of iron transporters in the ligated duodenal loops of broilers." in: **Journal of animal science**, Vol. 95, Issue 4, pp. 1587-1597, (2017) ([PubMed](#)).

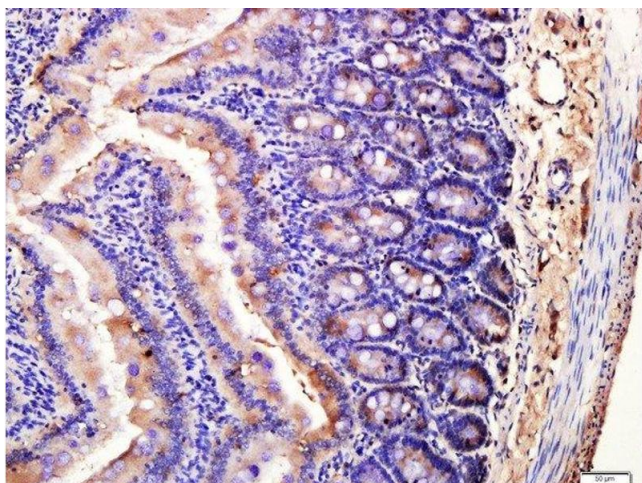
Zhang, Zhao, Chang, Zhang, Chu, Zhang, Liu, Guo, Wang, Gao, Zhang, Chu: "Calcium channel blockers ameliorate iron overload-associated hepatic fibrosis by altering iron transport and stellate cell apoptosis." in: **Toxicology and applied pharmacology**, Vol. 301, pp. 50-60, (2016) ([PubMed](#)).

Images



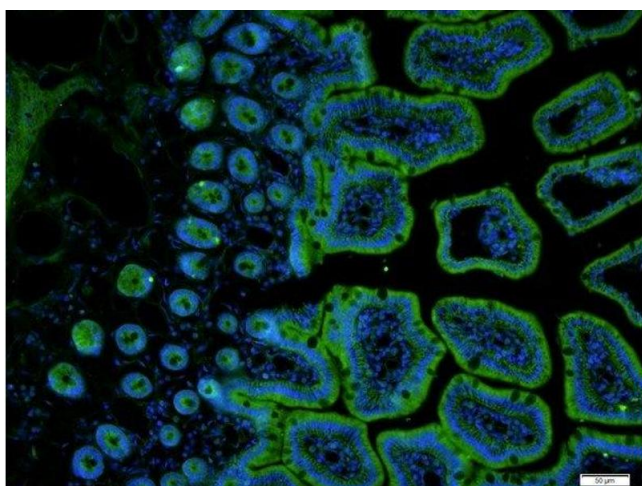
Immunohistochemistry

Image 1. Formalin-fixed and paraffin embedded rat kidney labeled with Anti-DMT1/Dematin Polyclonal Antibody, Unconjugated (ABIN701065) at 1:200 followed by conjugation to the secondary antibody and DAB staining.



Immunohistochemistry (Paraffin-embedded Sections)

Image 2. Paraformaldehyde-fixed, paraffin embedded mouse small intestine tissue, Antigen retrieval by boiling in sodium citrate buffer(pH6) for 15min, Block endogenous peroxidase by 3% hydrogen peroxide for 30 minutes, Blocking buffer (normal goat serum) at 37°C for 20min, Antibody incubation with Rabbit Anti-SLC11A2 Polyclonal Antibody, Unconjugated at 1:400 overnight at 4°C, followed by a conjugated secondary and DAB staining



Immunofluorescence (Paraffin-embedded Sections)

Image 3. Paraformaldehyde-fixed, paraffin embedded mouse small intestine tissue, Antigen retrieval by boiling in sodium citrate buffer(pH6) for 15min, Block endogenous peroxidase by 3% hydrogen peroxide for 30 minutes, Blocking buffer (normal goat serum) at 37°C for 20min, Antibody incubation with Rabbit Anti-SLC11A2 Polyclonal Antibody, Unconjugated at 1:400 overnight at 4°C, followed by a conjugated secondary-FITC) for 90 minutes and DAPI staining