

Datasheet for ABIN7010825

**anti-P2RY2 antibody****2** Images[Go to Product page](#)

## Overview

Quantity:	60 µL
Target:	P2RY2
Reactivity:	Human, Mouse
Host:	Rabbit
Clonality:	Polyclonal
Conjugate:	This P2RY2 antibody is un-conjugated
Application:	Western Blotting (WB), Immunofluorescence (IF)

## Product Details

Immunogen:	Recombinant fusion protein of human P2RY2 (NP_788086.1).
Isotype:	IgG
Characteristics:	Polyclonal Antibody
Purification:	Affinity purification

## Target Details

Target:	P2RY2
Alternative Name:	P2RY2 ( <a href="#">P2RY2 Products</a> )
Background:	The product of this gene belongs to the family of P2 receptors, which is activated by extracellular nucleotides and subdivided into P2X ligand-gated ion channels and P2Y G-protein coupled receptors. This family has several receptor subtypes with different pharmacological selectivity, which overlaps in some cases, for various adenosine and uridine nucleotides. This

## Target Details

receptor, found on many cell types, is activated by ATP and UTP and is reported to be overexpressed on some cancer cell types. It is involved in many cellular functions, such as proliferation, apoptosis and inflammation. Three transcript variants encoding the same protein have been identified for this gene.

Molecular Weight: Observed\_MW: 50 kDa  
Calculated\_MW: 42 kDa

Gene ID: 5029

UniProt: [P41231](#)

Pathways: [Cellular Response to Molecule of Bacterial Origin, Smooth Muscle Cell Migration](#)

## Application Details

Application Notes: WB 1:500-1:2000 IF 1:10-1:100

Restrictions: For Research Use only

## Handling

Format: Liquid

Concentration: 1 mg/mL

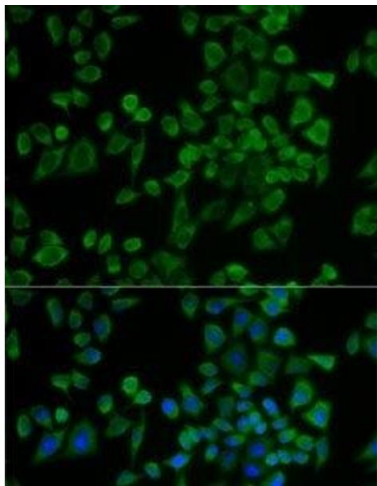
Buffer: PBS with 0.02 % sodium azide, 50 % glycerol, pH 7.3

Preservative: Sodium azide

Precaution of Use: This product contains Sodium azide: a POISONOUS AND HAZARDOUS SUBSTANCE which should be handled by trained staff only.

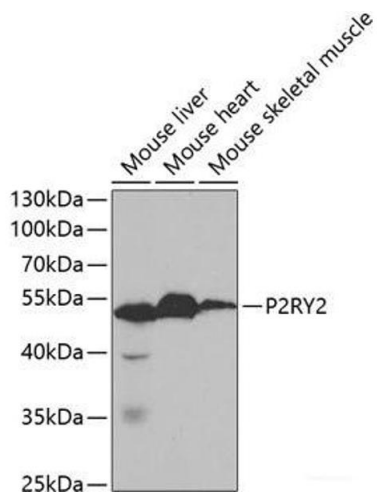
Storage: -20 °C

Storage Comment: Store at -20°C. Avoid freeze / thaw cycles.



Immunofluorescence

**Image 1.** Immunofluorescence analysis of U2OS cells using P2RY2 Polyclonal Antibody



Western Blotting

**Image 2.** Western blot analysis of extracts of various cell lines using P2RY2 Polyclonal Antibody at dilution of 1:1000.