



[Go to Product page](#)

Datasheet for ABIN7010921  
**anti-DICER1 antibody**

4 Images

Overview

Quantity:	60 µL
Target:	DICER1
Reactivity:	Human, Mouse, Rat
Host:	Rabbit
Clonality:	Polyclonal
Application:	Immunohistochemistry (IHC), Immunofluorescence (IF)

Product Details

Immunogen:	Recombinant fusion protein of human DICER1 (NP_085124.2).
Isotype:	IgG
Characteristics:	Polyclonal Antibody
Purification:	Affinity purification

Target Details

Target:	DICER1
Alternative Name:	DICER1 ( <a href="#">DICER1 Products</a> )
Background:	<p>This gene encodes a protein possessing an RNA helicase motif containing a DEXH box in its amino terminus and an RNA motif in the carboxy terminus. The encoded protein functions as a ribonuclease and is required by the RNA interference and small temporal RNA (stRNA) pathways to produce the active small RNA component that represses gene expression.</p> <p>Alternative splicing results in multiple transcript variants.</p>

## Target Details

Gene ID:	23405
UniProt:	<a href="#">Q9UPY3</a>
Pathways:	<a href="#">Regulatory RNA Pathways</a> , <a href="#">Stem Cell Maintenance</a> , <a href="#">Ribonucleoprotein Complex Subunit Organization</a>

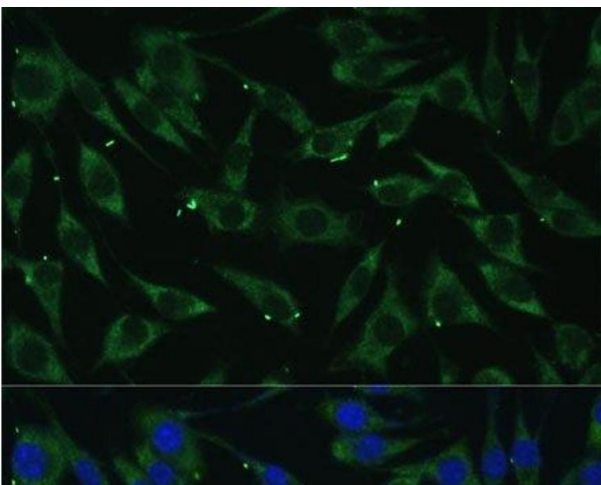
## Application Details

Application Notes:	IHC 1:50-1:200 IF 1:100-1:200
Restrictions:	For Research Use only

## Handling

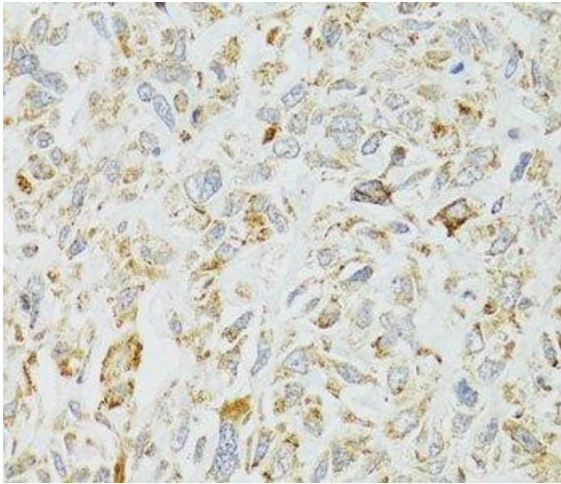
Format:	Liquid
Concentration:	1 mg/mL
Buffer:	PBS with 0.02 % sodium azide, 50 % glycerol, pH 7.3
Preservative:	Sodium azide
Precaution of Use:	This product contains Sodium azide: a POISONOUS AND HAZARDOUS SUBSTANCE which should be handled by trained staff only.
Storage:	-20 °C
Storage Comment:	Store at -20°C. Avoid freeze / thaw cycles.

## Images



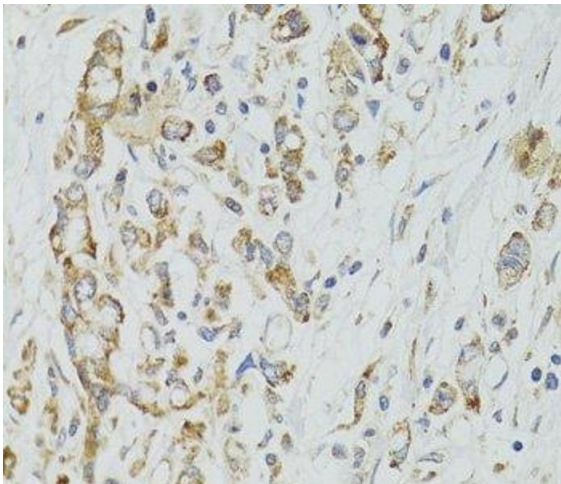
### Immunofluorescence

**Image 1.** Immunofluorescence analysis of L929 cells using DICER1 Polyclonal Antibody at dilution of 1:100 (40x lens). Blue: DAPI for nuclear staining.



#### Immunohistochemistry (Paraffin-embedded Sections)

**Image 2.** Immunohistochemistry of paraffin-embedded Human lung cancer using DICER1 Polyclonal Antibody at dilution of 1:100 (40x lens).



#### Immunohistochemistry (Paraffin-embedded Sections)

**Image 3.** Immunohistochemistry of paraffin-embedded Human gastric cancer using DICER1 Polyclonal Antibody at dilution of 1:100 (40x lens).

Please check the [product details page](#) for more images. Overall 4 images are available for ABIN7010921.