

Datasheet for ABIN701095
anti-SLC40A1 antibody

2 Images

[Go to Product page](#)

Overview

Quantity:	100 µL
Target:	SLC40A1
Reactivity:	Human, Mouse, Rat, Dog, Pig
Host:	Rabbit
Clonality:	Polyclonal
Conjugate:	This SLC40A1 antibody is un-conjugated
Application:	Western Blotting (WB), Immunofluorescence (Paraffin-embedded Sections) (IF (p)), Immunohistochemistry (Paraffin-embedded Sections) (IHC (p))

Product Details

Immunogen:	KLH conjugated synthetic peptide derived from human SLC40A1
Isotype:	IgG
Cross-Reactivity:	Dog, Human, Mouse, Pig, Rat
Purification:	Purified by Protein A.

Target Details

Target:	SLC40A1
Alternative Name:	SLC40A1 (SLC40A1 Products)
Background:	Synonyms: Ferroportin 1, Ferroportin-1, FPN1, HFE4, IREG1, Iron regulated transporter 1, Iron-regulated transporter 1, MTP1, S40A1_HUMAN, SLC40A1, Solute carrier family 40 member 1, MST079, MSTP079, MTP1, SLC11A3.

Target Details

Background: SLC40A1 may be involved in iron export from duodenal epithelial cells and also in transfer of iron between maternal and fetal circulation. It mediates iron efflux in the presence of a ferroxidase (hephaestin and/or ceruloplasmin). Defects in SLC40A1 are the cause of hemochromatosis type 4, an autosomal dominant iron-loading disorder characterized by early iron accumulation in reticuloendothelial cells and a marked increase in serum ferritin.

Molecular Weight: 63kDa

Gene ID: 30061

Pathways: [Transition Metal Ion Homeostasis](#)

Application Details

Application Notes: WB(1:100-500)
Optimal working dilution should be determined by the investigator.

Restrictions: For Research Use only

Handling

Format: Liquid

Concentration: 1 µg/µL

Buffer: Aqueous buffered solution containing 1 % BSA, 50 % glycerol and 0.09 % sodium azide.

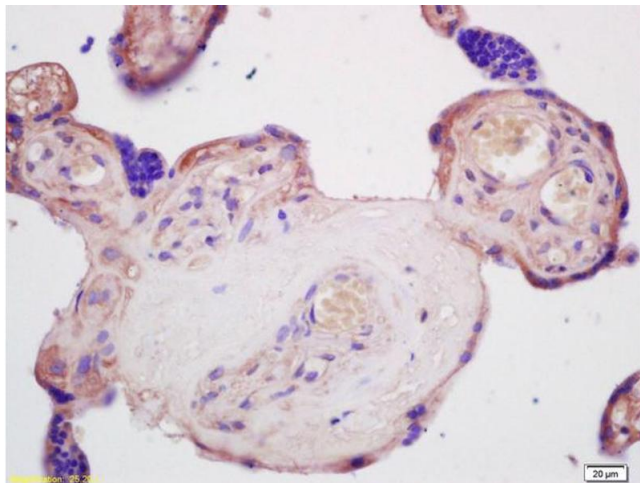
Preservative: Sodium azide

Precaution of Use: This product contains sodium azide: a POISONOUS AND HAZARDOUS SUBSTANCE which should be handled by trained staff only.

Storage: -20 °C

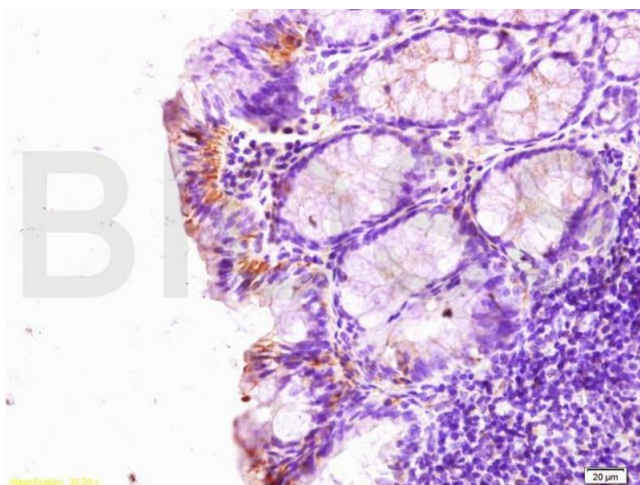
Storage Comment: Store at -20°C for 12 months.

Expiry Date: 12 months



Immunohistochemistry

Image 1. Formalin-fixed and paraffin embedded human placenta labeled with Rabbit Anti SLC40A1 Polyclonal Antibody, Unconjugated (ABIN701095) at 1:200 followed by conjugation to the secondary antibody and DAB staining



Immunohistochemistry

Image 2. Formalin-fixed and paraffin embedded rat colitis labeled with Rabbit Anti SLC40A1 Polyclonal Antibody, Unconjugated (ABIN701095) at 1:200 followed by conjugation to the secondary antibody and DAB staining