

Datasheet for ABIN7011050

anti-CANT1 antibody[Go to Product page](#)**1** Image

Overview

Quantity:	60 µL
Target:	CANT1
Reactivity:	Human
Host:	Rabbit
Clonality:	Polyclonal
Conjugate:	This CANT1 antibody is un-conjugated
Application:	Western Blotting (WB)

Product Details

Immunogen:	Recombinant fusion protein of human CANT1 (NP_001153245.1).
Isotype:	IgG
Characteristics:	Polyclonal Antibody
Purification:	Affinity purification

Target Details

Target:	CANT1
Alternative Name:	CANT1 (CANT1 Products)
Background:	This protein encoded by this gene belongs to the apyrase family. It functions as a calcium-dependent nucleotidase with a preference for UDP. Mutations in this gene are associated with Desbuquois dysplasia with hand anomalies. Alternatively spliced transcript variants have been noted for this gene.

Target Details

Molecular Weight:	Observed_MW: 45 kDa
	Calculated_MW: 27 kDa/38 kDa/44 kDa
Gene ID:	124583
UniProt:	Q8WVQ1

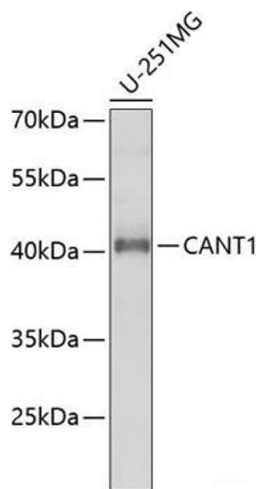
Application Details

Application Notes:	WB 1:500-1:2000
Restrictions:	For Research Use only

Handling

Format:	Liquid
Concentration:	1 mg/mL
Buffer:	PBS with 0.02 % sodium azide, 50 % glycerol, pH 7.3
Preservative:	Sodium azide
Precaution of Use:	This product contains Sodium azide: a POISONOUS AND HAZARDOUS SUBSTANCE which should be handled by trained staff only.
Storage:	-20 °C
Storage Comment:	Store at -20°C. Avoid freeze / thaw cycles.

Images



Western Blotting

Image 1. Western blot analysis of extracts of U-251MG cells using CANT1 Polyclonal Antibody at dilution of 1:1000.