

Datasheet for ABIN7011092

**anti-PYGB antibody**

## 2 Images

[Go to Product page](#)

## Overview

Quantity:	60 µL
Target:	PYGB (GPBB)
Reactivity:	Human, Mouse, Rat
Host:	Rabbit
Clonality:	Polyclonal
Conjugate:	This PYGB antibody is un-conjugated
Application:	Western Blotting (WB), Immunofluorescence (IF)

## Product Details

Immunogen:	Recombinant fusion protein of human PYGB (NP_002853.2).
Isotype:	IgG
Characteristics:	Polyclonal Antibody
Purification:	Affinity purification

## Target Details

Target:	PYGB (GPBB)
Alternative Name:	PYGB ( <a href="#">GPBB Products</a> )
Background:	The protein encoded by this gene is a glycogen phosphorylase found predominantly in the brain. The encoded protein forms homodimers which can associate into homotetramers, the enzymatically active form of glycogen phosphorylase. The activity of this enzyme is positively regulated by AMP and negatively regulated by ATP, ADP, and glucose-6-phosphate. This

## Target Details

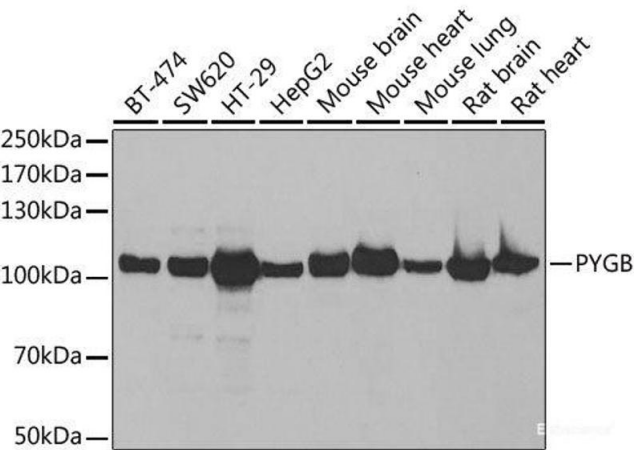
	enzyme catalyzes the rate-determining step in glycogen degradation.
Molecular Weight:	Observed_MW: 105 kDa Calculated_MW: 96 kDa
Gene ID:	5834
UniProt:	<a href="#">P11216</a>
Pathways:	<a href="#">Cellular Glucan Metabolic Process</a>

## Application Details

Application Notes:	WB 1:500-1:2000 IF 1:20-1:100
Restrictions:	For Research Use only

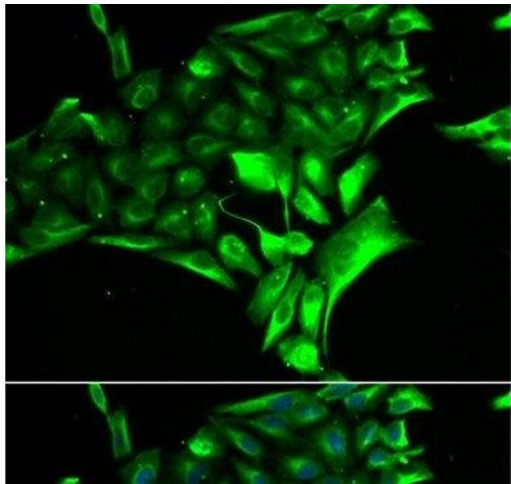
## Handling

Format:	Liquid
Concentration:	1 mg/mL
Buffer:	PBS with 0.02 % sodium azide, 50 % glycerol, pH 7.3
Preservative:	Sodium azide
Precaution of Use:	This product contains Sodium azide: a POISONOUS AND HAZARDOUS SUBSTANCE which should be handled by trained staff only.
Storage:	-20 °C
Storage Comment:	Store at -20°C. Avoid freeze / thaw cycles.



Western Blotting

**Image 1.** Western blot analysis of extracts of various cell lines using PYGB Polyclonal Antibody at dilution of 1:1000.



Immunofluorescence

**Image 2.** Immunofluorescence analysis of MCF-7 cells using PYGB Polyclonal Antibody