

## Datasheet for ABIN7011118

**anti-NAPG antibody**

## 2 Images

[Go to Product page](#)

## Overview

Quantity:	60 µL
Target:	NAPG
Reactivity:	Human, Mouse, Rat
Host:	Rabbit
Clonality:	Polyclonal
Conjugate:	This NAPG antibody is un-conjugated
Application:	Western Blotting (WB), Immunofluorescence (IF)

## Product Details

Immunogen:	Recombinant fusion protein of human NAPG (NP_003817.1).
Isotype:	IgG
Characteristics:	Polyclonal Antibody
Purification:	Affinity purification

## Target Details

Target:	NAPG
Alternative Name:	NAPG ( <a href="#">NAPG Products</a> )
Background:	This gene encodes soluble NSF attachment protein gamma. The soluble NSF attachment proteins (SNAPs) enable N-ethyl-maleimide-sensitive fusion protein (NSF) to bind to target membranes. NSF and SNAPs appear to be general components of the intracellular membrane fusion apparatus, and their action at specific sites of fusion must be controlled by SNAP

## Target Details

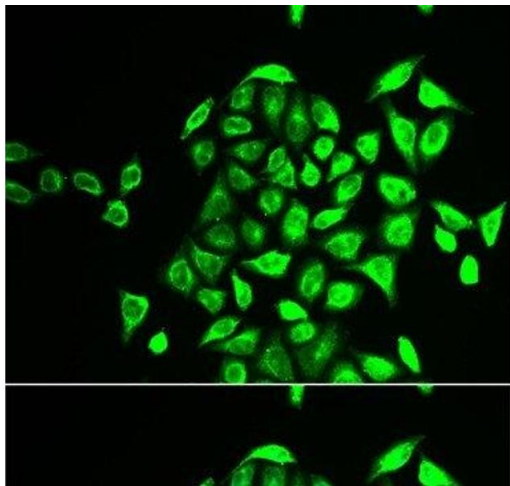
	receptors particular to the membranes being fused. The product of this gene mediates platelet exocytosis and controls the membrane fusion events of this process.
Molecular Weight:	Observed_MW: 36 kDa Calculated_MW: 25 kDa/34 kDa
Gene ID:	8774
UniProt:	<a href="#">Q99747</a>

## Application Details

Application Notes:	WB 1:500-1:2000 IF 1:10-1:100
Restrictions:	For Research Use only

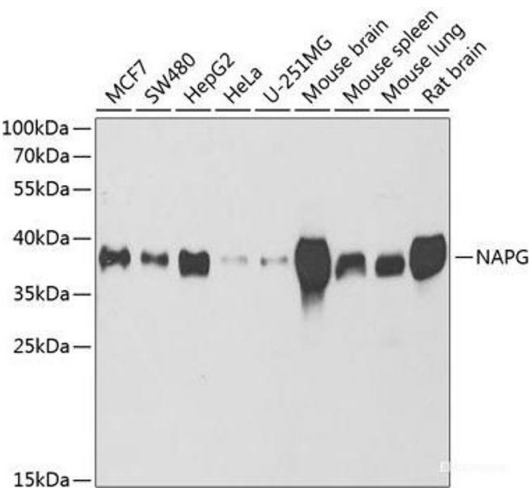
## Handling

Format:	Liquid
Concentration:	1 mg/mL
Buffer:	PBS with 0.02 % sodium azide, 50 % glycerol, pH 7.3
Preservative:	Sodium azide
Precaution of Use:	This product contains Sodium azide: a POISONOUS AND HAZARDOUS SUBSTANCE which should be handled by trained staff only.
Storage:	-20 °C
Storage Comment:	Store at -20°C. Avoid freeze / thaw cycles.



Immunofluorescence

**Image 1.** Immunofluorescence analysis of U2OS cells using NAPG Polyclonal Antibody



Western Blotting

**Image 2.** Western blot analysis of extracts of various cell lines using NAPG Polyclonal Antibody at dilution of 1:1000.