

Datasheet for ABIN7011156

anti-KIF2B antibody[Go to Product page](#)**1** Image

Overview

Quantity:	60 µL
Target:	KIF2B
Reactivity:	Human, Mouse, Rat
Host:	Rabbit
Clonality:	Polyclonal
Conjugate:	This KIF2B antibody is un-conjugated
Application:	Western Blotting (WB)

Product Details

Immunogen:	Recombinant fusion protein of human KIF2B (NP_115948.4).
Isotype:	IgG
Characteristics:	Polyclonal Antibody
Purification:	Affinity purification

Target Details

Target:	KIF2B
Alternative Name:	KIF2B (KIF2B Products)
Background:	KIF2B (Kinesin Family Member 2B) is a Protein Coding gene. Diseases associated with KIF2B include Charcot-Marie-Tooth Disease, Type 4C and Hereditary Neuropathies. Among its related pathways are Signaling by GPCR and Mitotic Prometaphase. Gene Ontology (GO) annotations related to this gene include ATPase activity and microtubule motor activity. An important

Target Details

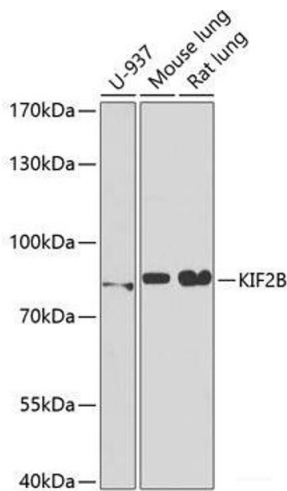
	paralog of this gene is KIF2A.
Molecular Weight:	Observed_MW: 76 kDa Calculated_MW: 76 kDa
Gene ID:	84643
UniProt:	Q8N4N8
Pathways:	Microtubule Dynamics

Application Details

Application Notes:	WB 1:500-1:2000
Restrictions:	For Research Use only

Handling

Format:	Liquid
Concentration:	1 mg/mL
Buffer:	PBS with 0.02 % sodium azide, 50 % glycerol, pH 7.3
Preservative:	Sodium azide
Precaution of Use:	This product contains Sodium azide: a POISONOUS AND HAZARDOUS SUBSTANCE which should be handled by trained staff only.
Storage:	-20 °C
Storage Comment:	Store at -20°C. Avoid freeze / thaw cycles.



Western Blotting

Image 1. Western blot analysis of extracts of various cell lines using KIF2B Polyclonal Antibody at dilution of 1:1000.