



## Datasheet for ABIN7011313 anti-PSAT1 antibody



[Go to Product page](#)

### 3 Images

#### Overview

Quantity:	60 µL
Target:	PSAT1
Reactivity:	Human, Mouse, Rat
Host:	Rabbit
Clonality:	Polyclonal
Application:	Immunofluorescence (IF)

#### Product Details

Immunogen:	Recombinant fusion protein of human PSAT1 (NP_478059.1).
Isotype:	IgG
Characteristics:	Polyclonal Antibody
Purification:	Affinity purification

#### Target Details

Target:	PSAT1
Alternative Name:	PSAT1 ( <a href="#">PSAT1 Products</a> )
Background:	This gene encodes a member of the class-V pyridoxal-phosphate-dependent aminotransferase family. The encoded protein is a phosphoserine aminotransferase and decreased expression may be associated with schizophrenia. Mutations in this gene are also associated with phosphoserine aminotransferase deficiency. Alternative splicing results in multiple transcript variants. Pseudogenes of this gene have been defined on chromosomes 1, 3, and 8.

## Target Details

Gene ID:	29968
UniProt:	<a href="#">Q9Y617</a>
Pathways:	<a href="#">Warburg Effect</a>

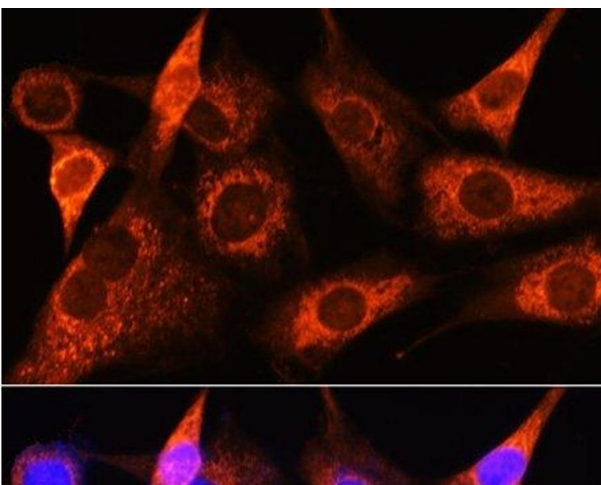
## Application Details

Application Notes:	IF 1:10-1:100
Restrictions:	For Research Use only

## Handling

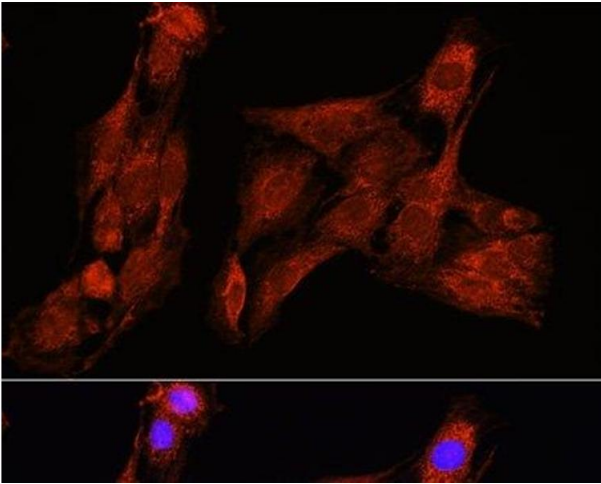
Format:	Liquid
Concentration:	1 mg/mL
Buffer:	PBS with 0.02 % sodium azide, 50 % glycerol, pH 7.3
Preservative:	Sodium azide
Precaution of Use:	This product contains Sodium azide: a POISONOUS AND HAZARDOUS SUBSTANCE which should be handled by trained staff only.
Storage:	-20 °C
Storage Comment:	Store at -20°C. Avoid freeze / thaw cycles.

## Images



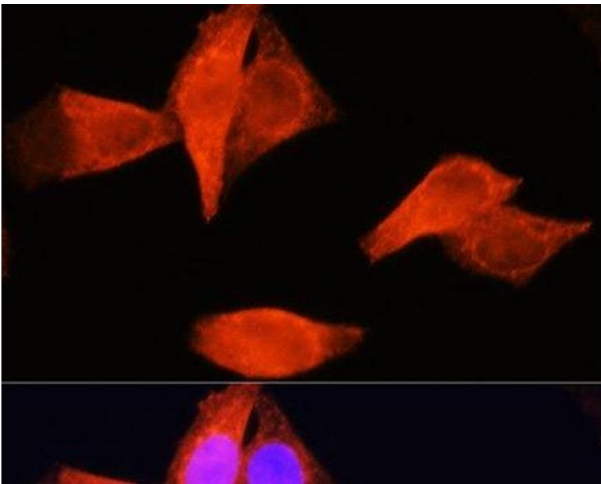
### Immunofluorescence

**Image 1.** Immunofluorescence analysis of NIH-3T3 cells using PSAT1 Polyclonal Antibody at dilution of 1:100 (40x lens). Blue: DAPI for nuclear staining.



### Immunofluorescence

**Image 2.** Immunofluorescence analysis of C6 cells using PSAT1 Polyclonal Antibody at dilution of 1:100 (40x lens).  
Blue: DAPI for nuclear staining.



### Immunofluorescence

**Image 3.** Immunofluorescence analysis of HeLa cells using PSAT1 Polyclonal Antibody at dilution of 1:100 (40x lens).  
Blue: DAPI for nuclear staining.