

Datasheet for ABIN7011326

anti-RPH3A antibody[Go to Product page](#)**1** Image

Overview

Quantity:	60 µL
Target:	RPH3A
Reactivity:	Mouse, Rat
Host:	Rabbit
Clonality:	Polyclonal
Application:	Western Blotting (WB)

Product Details

Immunogen:	Recombinant fusion protein of human RPH3A (NP_055769.2).
Isotype:	IgG
Characteristics:	Polyclonal Antibody
Purification:	Affinity purification

Target Details

Target:	RPH3A
Alternative Name:	RPH3A (RPH3A Products)
Background:	The protein encoded by this gene is thought to be an effector for RAB3A, which is a small G protein that acts in the late stages of neurotransmitter exocytosis. The encoded protein may be involved in neurotransmitter release and synaptic vesicle traffic.
Molecular Weight:	Observed_MW: 95 kDa Calculated_MW: 76 kDa

Target Details

Gene ID:	22895
UniProt:	Q9Y2J0
Pathways:	Synaptic Vesicle Exocytosis

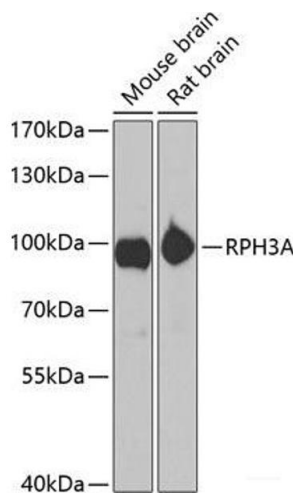
Application Details

Application Notes:	WB 1:500-1:2000
Restrictions:	For Research Use only

Handling

Format:	Liquid
Concentration:	1 mg/mL
Buffer:	PBS with 0.02 % sodium azide, 50 % glycerol, pH 7.3
Preservative:	Sodium azide
Precaution of Use:	This product contains Sodium azide: a POISONOUS AND HAZARDOUS SUBSTANCE which should be handled by trained staff only.
Storage:	-20 °C
Storage Comment:	Store at -20°C. Avoid freeze / thaw cycles.

Images



Western Blotting

Image 1. Western blot analysis of extracts of various cell lines using RPH3A Polyclonal Antibody at dilution of 1:1000.